

Water Quality Monitoring Results at W1 - Mid-Ebb Tide

Date	Weather Condition	Sea Condition**	Sampling Time	Depth (m)		Temperature (°C)		Salinity ppt		DO Saturation (%)		Dissolved Oxygen (mg/L)			Turbidity(NTU)			Suspended Solids (mg/L)		
						Value	Average	Value	Average	Value	Average	Value	Average	DA*	Value	Average	DA*	Average		DA*
06/01/05	Sunny	Calm	09:41	Surface	1	26.7	26.7	33.7	33.7	90.6	90.6	7.1	7.1	7.0	3.3	3.3	5.3	4.4	4.1	6.0
				Middle	4	26.7	26.7	33.7	33.7	88.7	88.5	6.9	6.9		4.4	4.4		7.4	7.2	
				Bottom	7	26.7	26.7	33.7	33.7	87.4	87.3	6.8	6.8		8.2	8.1		6.7	6.7	
06/02/05	Cloudy	Calm	09:56	Surface	1	25.8	25.8	30.5	30.5	82.0	82.0	6.4	6.4	6.4	2.8	2.9	4.6	4.2	3.9	5.7
				Middle	4	25.8	25.8	30.5	30.5	80.2	80.0	6.3	6.3		4.0	4.0		7.0	6.8	
				Bottom	7	25.8	25.8	30.5	30.5	79.1	79.0	6.2	6.2		6.7	6.8		6.4	6.4	
06/03/05	Sunny	Calm	11:01	Surface	1	26.2	26.2	29.0	29.1	97.2	97.2	6.7	6.7	6.8	2.1	2.1	2.2	3.8	3.8	3.4
				Middle	4	26.2	26.2	29.3	29.3	97.2	97.5	6.7	6.8		2.4	2.4		3.1	3.1	
				Bottom	7	26.2	26.2	29.3	29.2	97.8	97.7	6.8	6.8		2.2	2.2		3.2	3.3	
06/07/05	Fine	Calm	12:26	Surface	1	24.1	24.1	32.4	32.4	92.4	92.4	6.5	6.5	6.4	5.3	5.4	8.7	4.5	4.1	5.6
				Middle	4	23.8	23.8	32.4	32.4	88.9	88.7	6.3	6.3		6.5	6.5		3.5	5.1	
				Bottom	7	23.8	23.8	32.5	32.4	86.5	86.5	6.1	6.1		14.0	14.1		9.0	7.5	
06/09/05	Sunny	Moderate	13:42	Surface	1	25.3	25.4	32.3	32.3	91.0	91.0	6.4	6.4	6.4	3.2	3.4	2.5	7.2	5.8	5.5
				Middle	4	25.1	25.1	32.4	32.4	91.3	91.4	6.4	6.4		2.5	2.3		4.9	5.4	
				Bottom	7	25.0	25.0	32.6	32.6	91.8	91.8	6.5	6.5		1.8	1.8		5.2	5.3	
06/10/05	Sunny	Calm	14:29	Surface	1	26.1	26.1	29.5	29.5	98.6	98.6	6.9	6.9	6.9	3.2	3.2	3.4	4.5	4.5	4.0
				Middle	4	26.1	26.1	29.7	29.7	98.5	98.6	6.8	6.8		3.2	3.4		3.7	3.7	
				Bottom	7	26.1	26.1	29.8	29.8	99.2	99.3	6.9	6.9		3.7	3.6		3.8	3.9	

Remarks: * DA: Depth-Averaged
 ** Calm: Small or no wave; Moderate: Between calm and rough; Rough : White capped or rougher
 *** Cancelled due to Thunderstorm Warning

Water Quality Monitoring Results at W1 - Mid-Flood Tide

Date	Weather Condition	Sea Condition**	Sampling Time	Depth (m)		Temperature (°C)		Salinity ppt		DO Saturation (%)		Dissolved Oxygen (mg/L)			Turbidity(NTU)			Suspended Solids (mg/L)		
						Value	Average	Value	Average	Value	Average	Value	Average	DA*	Value	Average	DA*	Average		DA*
06/01/05	Sunny	Calm	14:30	Surface	1	27.2 27.1	27.2	33.7 33.7	33.7	90.4 87.9	89.2	7.0 6.8	6.9	7.0	4.9 4.5	4.7	7.1	2.9 3.0	3.0	4.4
				Middle	4	26.8 26.8	26.8	33.7 33.7	33.7	95.0 89.6	92.3	7.3 6.9	7.1		6.8 6.4	6.6		6.7 6.7	6.7	
				Bottom	7	26.7 26.7	26.7	33.7 33.7	33.7	89.1 88.7	88.9	6.9 6.8	6.9		10.1 9.6	9.9		3.5 3.5	3.5	
06/02/05	Cloudy	Calm	14:45	Surface	1	26.2 26.1	26.2	30.5 30.5	30.5	81.8 79.5	80.7	6.3 6.3	6.3	6.5	4.4 4.1	4.3	6.0	4.0 4.0	4.0	4.6
				Middle	4	25.8 25.8	25.8	30.5 30.5	30.5	86.0 81.1	83.6	6.6 6.6	6.6		6.1 5.8	6.0		6.4 6.4	6.4	
				Bottom	7	25.8 25.8	25.8	30.5 30.5	30.5	80.6 80.3	80.5	6.2 6.2	6.2		7.5 7.6	7.6		3.3 3.3	3.3	
06/03/05	Sunny	Calm	14:29	Surface	1	26.2 26.2	26.2	29.1 29.2	29.2	99.6 99.4	99.5	6.9 6.9	6.9	6.9	2.5 2.4	2.5	2.2	4.6 4.1	4.4	4.9
				Middle	4.5	26.2 26.2	26.2	29.2 29.2	29.2	99.5 99.6	99.6	6.9 6.9	6.9		2.1 2.1	2.1		6.2 5.7	6.0	
				Bottom	8	26.2 26.2	26.2	29.2 29.1	29.2	99.3 98.5	98.9	6.9 6.8	6.9		2.1 2.1	2.1		3.9 4.6	4.3	
06/07/05	Cloudy	Moderate	17:07	Surface	1	24.1 24.1	24.1	32.4 32.4	32.4	87.9 88.2	88.1	6.5 6.5	6.5	6.4	5.0 4.8	4.9	5.5	4.8 3.3	4.1	5.4
				Middle	4	23.8 23.8	23.8	32.5 32.5	32.5	84.8 85.2	85.0	6.2 6.2	6.2		4.5 4.5	4.5		3.7 6.4	5.1	
				Bottom	7	23.9 23.9	23.9	32.5 32.5	32.5	84.9 84.8	84.9	6.0 6.0	6.0		7.1 7.3	7.2		9.0 5.0	7.0	
06/09/05	Sunny	Moderate	08:27	Surface	1	25.3 25.3	25.3	32.3 32.3	32.3	93.5 93.3	93.4	6.6 6.5	6.6	6.6	3.2 3.2	3.2	2.4	6.4 4.9	5.7	5.5
				Middle	4	25.1 25.1	25.1	32.4 32.4	32.4	93.5 93.6	93.6	6.6 6.6	6.6		2.5 2.1	2.3		5.7 5.7	5.7	
				Bottom	7	24.9 24.9	24.9	32.6 32.6	32.6	93.9 93.9	93.9	6.6 6.6	6.6		1.8 1.8	1.8		5.2 5.2	5.2	
06/10/05	Sunny	Calm	07:56	Surface	1	26.1 26.1	26.1	29.5 29.5	29.5	101.2 101.1	101.2	7.0 7.0	7.0	7.0	4.5 4.3	4.4	3.7	5.5 4.9	5.2	5.8
				Middle	4	26.1 26.1	26.1	29.6 29.6	29.6	100.9 101.0	101.0	7.0 7.0	7.0		3.7 3.5	3.6		7.3 6.8	7.1	
				Bottom	7	26.1 26.1	26.1	29.7 29.7	29.7	101.1 100.8	101.0	7.0 7.0	7.0		3.2 3.2	3.2		4.6 5.5	5.1	

Remarks: * DA: Depth-Averaged
 ** Calm: Small or no wave; Moderate: Between calm and rough; Rough : White capped or rougher
 *** Cancelled due to Thunderstorm Warning

Water Quality Monitoring Results at W2 - Mid-Ebb Tide

Date	Weather Condition	Sea Condition**	Sampling Time	Depth (m)		Temperature (°C)		Salinity ppt		DO Saturation (%)		Dissolved Oxygen (mg/L)			Turbidity(NTU)			Suspended Solids (mg/L)			
						Value	Average	Value	Average	Value	Average	Value	Average	DA*	Value	Average	DA*	Average		DA*	
06/01/05	Sunny	Calm	09:52	Surface	1	26.7	26.7	33.7	33.7	89.3	89.3	6.9	6.9	7.1	3.9	4.0	6.8	3.2	3.2	3.8	
				Middle	5.5	26.6	26.6	33.7	33.7	89.8	92.5	6.9	7.2		7.2	7.2		4.2	4.2		
				Bottom	10	26.6	26.6	33.7	33.7	94.6	93.6	7.3	7.2		7.2	9.3		9.2	3.9		3.9
06/02/05	Cloudy	Calm	10:07	Surface	1	25.7	25.7	30.5	30.5	80.8	80.8	6.3	6.3	6.4	3.5	3.6	6.1	3.1	3.1	4.4	
				Middle	5.5	25.7	25.7	30.5	30.5	81.3	83.8	6.3	6.5		6.5	6.5		5.0	5.0		
				Bottom	10	25.7	25.7	30.5	30.5	85.6	84.7	6.6	6.6		6.6	8.4		8.3	5.0		5.0
06/03/05	Sunny	Calm	11:05	Surface	1	26.2	26.2	29.0	29.2	97.6	97.3	6.8	6.8	6.8	2.6	2.6	2.5	4.2	4.3	4.6	
				Middle	6	26.2	26.2	29.3	29.5	97.2	97.8	6.7	6.8		6.8	2.9		2.8	4.3		4.3
				Bottom	11	26.2	26.2	29.7	29.4	98.1	98.3	6.8	6.8		6.8	2.1		2.2	5.1		5.2
06/07/05	Fine	Calm	12:31	Surface	1	24.1	24.1	32.4	32.4	89.8	89.9	6.3	6.3	6.3	5.1	4.9	5.1	4.6	5.6	5.5	
				Middle	6	23.9	23.9	32.5	32.5	88.0	88.2	6.2	6.2		6.2	5.1		5.0	6.1		5.3
				Bottom	11	23.8	23.8	32.4	32.4	86.9	87.2	6.2	6.2		6.2	5.1		5.3	6.5		5.5
06/09/05	Sunny	Moderate	13:47	Surface	1	25.3	25.3	32.3	32.3	91.0	91.0	6.4	6.4	6.5	3.2	3.2	2.4	5.5	5.1	5.8	
				Middle	5	25.0	25.0	32.5	32.5	91.6	91.6	6.5	6.5		6.5	2.1		2.0	6.2		5.6
				Bottom	9	24.8	24.8	32.9	32.9	91.7	91.7	6.5	6.5		6.5	2.1		2.1	5.7		6.8
06/10/05	Sunny	Calm	14:33	Surface	1	26.1	26.1	29.5	29.5	99.0	99.1	6.9	6.9	6.9	3.4	3.4	3.8	5.0	5.1	5.5	
				Middle	6	26.1	26.1	29.7	29.7	98.7	98.7	6.9	6.9		6.9	3.8		3.8	5.1		5.1
				Bottom	11	26.0	26.0	30.1	30.2	99.3	99.5	6.9	6.9		6.9	4.3		4.2	6.1		6.2

Remarks: * DA: Depth-Averaged
 ** Calm: Small or no wave; Moderate: Between calm and rough; Rough : White capped or rougher
 *** Cancelled due to Thunderstorm Warning

Water Quality Monitoring Results at W2 - Mid-Flood Tide

Date	Weather Condition	Sea Condition**	Sampling Time	Depth (m)		Temperature (°C)		Salinity ppt		DO Saturation (%)		Dissolved Oxygen (mg/L)			Turbidity(NTU)			Suspended Solids (mg/L)								
						Value	Average	Value	Average	Value	Average	Value	Average	DA*	Value	Average	DA*	Average		DA*						
06/01/05	Sunny	Calm	14:35	Surface	1	26.9	26.9	33.7	33.7	94.9	94.6	7.3	7.3	7.5	5.2	5.1	6.8	3.0	3.0	5.3						
						26.9																				
				Middle	6	26.7	26.7	33.7	33.7	98.3	97.9	7.6	7.6		6.2			6.2			6.0	5.8				
		26.7																								
		Bottom	11	26.7	26.7	33.7	33.7	88.6	88.0	6.8	6.8	6.8	6.8	9.0	9.2	6.5	7.0									
		26.6																								
06/02/05	Cloudy	Calm	14:50	Surface	1	25.9	25.9	30.5	30.5	85.9	85.7	6.6	6.6	6.7	4.7	4.6	6.2	2.8	2.8	4.8						
						25.9																				
				Middle	5.5	25.8	25.8	30.5	30.5	89.0	88.6	6.8	6.8		5.6			5.6			5.7	5.5				
		25.8																								
		Bottom	10	25.7	25.7	30.5	30.5	80.2	79.6	6.2	6.2	6.2	6.2	8.1	8.3	6.1	6.1									
		25.7																								
		25.7																								
06/03/05	Sunny	Calm	14:33	Surface	1	26.2	26.2	29.1	29.2	98.3	98.5	6.8	6.8	6.9	2.0	2.0	2.1	3.8	4.2	4.0						
						26.2																				
				Middle	6	26.2	26.2	29.2	29.5	99.0	99.3	6.9	6.9		2.1			2.2			3.7	3.9				
		26.2																								
		Bottom	11	26.2	26.2	29.7	29.4	99.6	98.9	6.9	6.9	6.9	6.9	2.0	2.0	3.6	3.9									
		26.2																								
		26.2																								
06/07/05	Cloudy	Moderate	17:12	Surface	1	24.1	24.1	32.4	32.4	89.0	89.1	6.4	6.4	6.4	3.6	3.5	4.8	4.8	6.4	5.7						
						24.1																				
				Middle	6	23.8	23.8	32.5	32.5	86.9	86.7	6.3	6.3		4.6			4.8			6.4	5.4				
		23.8																								
		Bottom	11	23.8	23.8	32.5	32.5	85.6	85.5	6.1	6.1	6.1	6.1	6.2	6.2	6.1	5.3									
		23.8																								
		23.8																								
06/09/05	Sunny	Moderate	08:30	Surface	1	25.3	25.3	32.2	32.2	92.4	92.3	6.5	6.5	6.5	2.8	2.8	2.5	4.9	4.8	5.7						
						25.3																				
				Middle	5	25.1	25.1	32.4	32.4	92.2	92.2	6.5	6.5		2.1			2.1			6.2	5.7				
		25.1																								
		Bottom	9	24.8	24.8	32.9	32.9	92.2	92.2	6.5	6.5	6.5	6.5	2.5	2.7	4.9	6.5									
		24.8																								
		24.8																								
06/10/05	Sunny	Calm	08:00	Surface	1	26.1	26.1	29.5	29.5	100.0	99.9	6.9	6.9	7.0	3.2	3.2	3.2	4.5	5.0	4.8						
						26.1																				
				Middle	5.5	26.1	26.1	29.6	29.6	100.2	100.4	6.9	7.0		3.1			3.1			4.4	4.7				
		26.1																								
		Bottom	10	26.0	26.0	30.1	30.1	101.0	101.1	7.0	7.0	7.0	7.0	3.2	3.3	4.3	4.6									
		26.0																								
		26.0																								

Remarks: * DA: Depth-Averaged
 ** Calm: Small or no wave; Moderate: Between calm and rough; Rough : White capped or rougher
 *** Cancelled due to Thunderstorm Warning

Water Quality Monitoring Results at W3 - Mid-Ebb Tide

Date	Weather Condition	Sea Condition**	Sampling Time	Depth (m)		Temperature (°C)		Salinity ppt		DO Saturation (%)		Dissolved Oxygen (mg/L)			Turbidity(NTU)			Suspended Solids (mg/L)		
						Value	Average	Value	Average	Value	Average	Value	Average	DA*	Value	Average	DA*	Average		DA*
06/01/05	Sunny	Calm	09:59	Surface	1	26.7	26.7	33.7	33.7	92.2	91.6	7.1	7.1	7.1	5.2	5.2	7.1	5.8	5.7	5.8
					26.7	33.7		90.9		7.0		5.1			5.6					
				Middle	5	26.7	33.7	90.6	91.5	7.0	7.1	8.1	8.2		5.0	5.7				
					26.6	33.7	92.3	7.1	8.2	6.3										
				Bottom	9	26.6	33.7	92.0	93.7	7.1	7.3	7.8	8.0		5.7	5.9				
					26.6	33.7	95.4	7.4	8.1	6.0										
06/02/05	Cloudy	Calm	10:14	Surface	1	25.8	25.8	30.5	30.5	83.4	82.9	6.4	6.4	6.4	4.7	4.7	6.5	5.5	5.4	5.4
					25.8	30.5		82.3		6.4		4.6			5.3					
				Middle	5	25.7	30.5	82.0	82.8	6.3	6.4	7.4	7.5		4.7	5.3				
					25.7	30.5	83.5	6.4	7.5	5.9										
				Bottom	9	25.6	30.5	83.2	84.8	6.4	6.6	7.1	7.3		5.4	5.6				
					25.6	30.5	86.4	6.7	7.4	5.7										
06/03/05	Sunny	Calm	11:11	Surface	1	26.2	26.2	29.1	29.3	98.3	98.3	6.8	6.8	6.8	2.5	2.5	2.8	3.5	3.3	3.4
					26.2	29.4		98.2		6.8		2.5			3.1					
				Middle	6	26.2	29.4	98.1	98.4	6.8	6.8	2.8	2.8		3.8	3.8				
					26.2	29.6	98.6	6.8	2.8	3.7										
				Bottom	11	26.2	29.7	98.6	99.2	6.8	6.9	3.0	3.0		3.1	3.0				
					26.2	29.1	99.7	6.9	2.9	2.9										
06/07/05	Fine	Calm	12:34	Surface	1	24.2	24.2	32.4	32.4	90.2	90.2	6.3	6.3	6.3	4.9	4.9	5.4	7.7	8.7	6.5
					24.2	32.4		90.1		6.3		4.9			9.6					
				Middle	5.5	23.8	32.4	88.0	87.8	6.2	6.2	4.8	5.3		3.1	5.3				
					23.8	32.4	87.6	6.2	5.7	7.5										
				Bottom	10	23.8	32.5	86.2	86.0	6.1	6.1	5.8	6.0		5.5	5.4				
					23.8	32.5	85.7	6.1	6.1	5.3										
06/09/05	Sunny	Moderate	13:54	Surface	1	25.3	25.3	32.3	32.3	90.8	90.8	6.4	6.4	6.4	3.5	3.5	3.0	8.3	6.2	6.2
					25.3	32.3		90.8		6.4		3.5			4.0					
				Middle	5.5	25.1	32.4	91.3	91.4	6.4	6.4	2.5	2.3		7.1	6.6				
					25.0	32.4	91.5	6.4	2.1	6.0										
				Bottom	10	24.8	33.0	91.5	91.5	6.4	6.4	3.2	3.2		5.5	5.9				
					24.8	33.0	91.4	6.4	3.2	6.3										
06/10/05	Sunny	Calm	14:39	Surface	1	26.1	26.1	29.5	29.5	99.9	99.9	6.9	6.9	6.9	3.2	3.3	3.7	4.2	4.0	4.0
					26.1	29.5		99.8		6.9		3.4			3.7					
				Middle	6	26.1	29.8	99.7	99.7	6.9	6.9	3.7	3.7		4.5	4.5				
					26.1	29.8	99.6	6.9	3.7	4.4										
				Bottom	11	26.0	30.1	100.1	100.1	6.9	6.9	4.1	4.1		3.7	3.6				
					26.0	30.1	100.1	6.9	4.1	3.4										

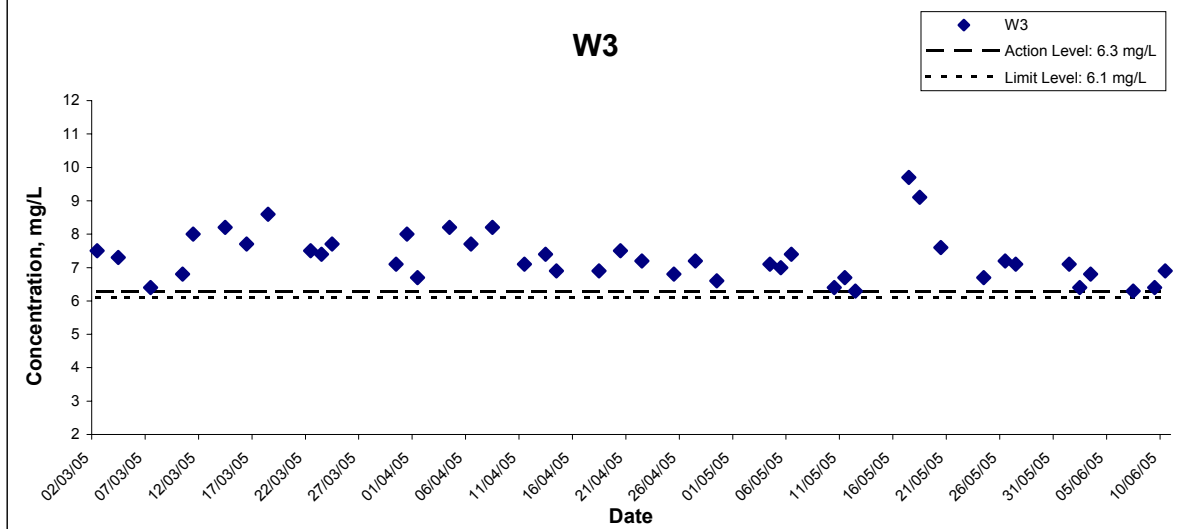
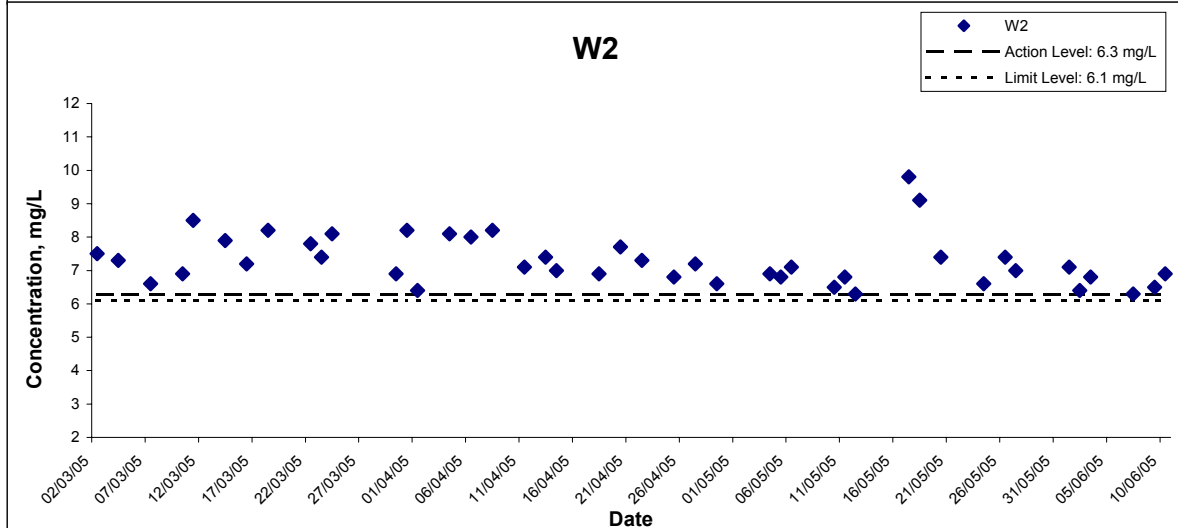
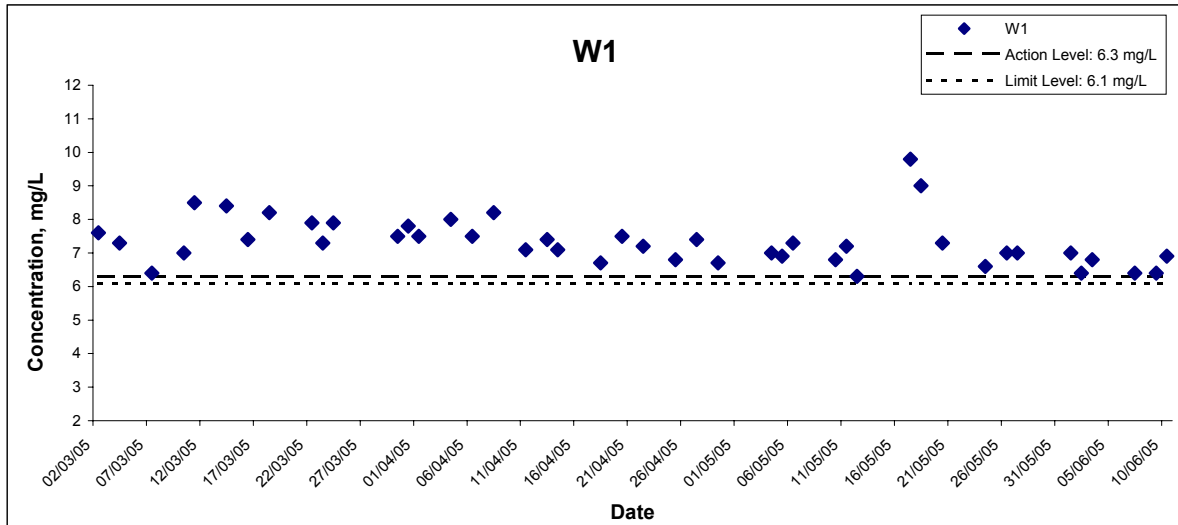
Remarks: * DA: Depth-Averaged
 ** Calm: Small or no wave; Moderate: Between calm and rough; Rough : White capped or rougher
 *** Cancelled due to Thunderstorm Warning

Water Quality Monitoring Results at W3 - Mid-Flood Tide

Date	Weather Condition	Sea Condition**	Sampling Time	Depth (m)		Temperature (°C)		Salinity ppt		DO Saturation (%)		Dissolved Oxygen (mg/L)		Turbidity(NTU)			Suspended Solids (mg/L)			
						Value	Average	Value	Average	Value	Average	Value	Average	DA*	Value	Average	DA*	Average		DA*
06/01/05	Sunny	Calm	14:40	Surface	1	26.8 26.8	26.8	33.7 33.7	33.7	100.1 99.0	99.6	7.8 7.7	7.8	7.3	3.8 3.9	3.9	5.5	6.5 7.0	6.8	5.4
				Middle	5.5	26.8 26.7	26.8	33.7 33.7	33.7	86.1 85.9	86.0	6.7 6.7	6.7		5.7 5.9	5.8		6.5 6.5	6.5	
				Bottom	10	26.6 26.6	26.6	33.7 33.7	33.7	86.7 89.6	88.2	6.8 7.0	6.9		6.9 6.7	6.8		3.0 2.9	3.0	
06/02/05	Cloudy	Calm	14:55	Surface	1	25.8 25.8	25.8	30.5 30.5	30.5	90.6 89.6	90.1	7.0 7.0	7.0	6.6	3.9 4.0	4.0	5.1	6.1 6.6	6.4	5.5
				Middle	5.5	25.8 25.8	25.8	30.5 30.5	30.5	78.0 77.8	77.9	6.1 6.1	6.1		5.2 5.4	5.3		6.1 6.1	6.1	
				Bottom	10	25.7 25.7	25.7	30.5 30.5	30.5	78.5 81.1	79.8	6.1 6.3	6.2		6.2 6.0	6.1		4.0 4.0	4.0	
06/03/05	Sunny	Calm	14:39	Surface	1	26.2 26.2	26.2	29.0 29.2	29.1	97.8 97.9	97.9	6.8 6.8	6.8	6.8	2.0 2.0	2.0	2.3	5.3 5.1	5.2	3.9
				Middle	6	26.2 26.2	26.2	29.3 29.8	29.6	97.9 98.8	98.4	6.8 6.8	6.8		2.4 2.4	2.4		2.7 3.1	2.9	
				Bottom	11	26.2 26.1	26.2	29.8 29.8	29.8	98.8 98.8	98.8	6.8 6.8	6.8		2.5 2.5	2.5		3.6 3.6	3.6	
06/07/05	Cloudy	Moderate	17:18	Surface	1	24.1 24.1	24.1	32.4 32.4	32.4	87.6 87.9	87.8	6.5 6.5	6.5	6.4	5.8 5.7	5.8	5.8	7.7 9.6	8.7	6.8
				Middle	5	23.8 23.8	23.8	32.5 32.5	32.5	84.4 84.6	84.5	6.3 6.3	6.3		4.3 4.3	4.3		2.8 8.1	5.5	
				Bottom	9	23.8 23.8	23.8	32.5 32.5	32.5	84.7 84.5	84.6	6.0 6.0	6.0		7.3 7.2	7.3		6.7 5.5	6.1	
06/09/05	Sunny	Moderate	08:35	Surface	1	25.3 25.3	25.3	32.3 32.3	32.3	91.7 91.6	91.7	6.4 6.4	6.4	6.5	3.2 3.2	3.2	2.5	6.9 4.2	5.6	6.1
				Middle	5.5	25.0 25.0	25.0	32.5 32.5	32.5	91.8 91.9	91.9	6.5 6.5	6.5		1.5 1.4	1.5		7.2 6.2	6.7	
				Bottom	10	24.8 24.8	24.8	33.0 33.0	33.0	91.9 91.9	91.9	6.5 6.5	6.5		2.8 2.8	2.8		5.2 6.8	6.0	
06/10/05	Sunny	Calm	08:06	Surface	1	26.1 26.1	26.1	29.5 29.5	29.5	99.7 99.3	99.5	6.9 6.9	6.9	6.9	3.1 2.9	3.0	3.2	6.3 6.1	6.2	4.5
				Middle	6	26.1 26.1	26.1	29.7 29.7	29.7	99.4 99.4	99.4	6.9 6.9	6.9		3.1 3.1	3.1		3.2 3.7	3.5	
				Bottom	11	26.0 26.0	26.0	30.2 30.3	30.3	100.3 100.3	100.3	6.9 6.9	6.9		3.5 3.5	3.5		3.7 3.7	3.7	

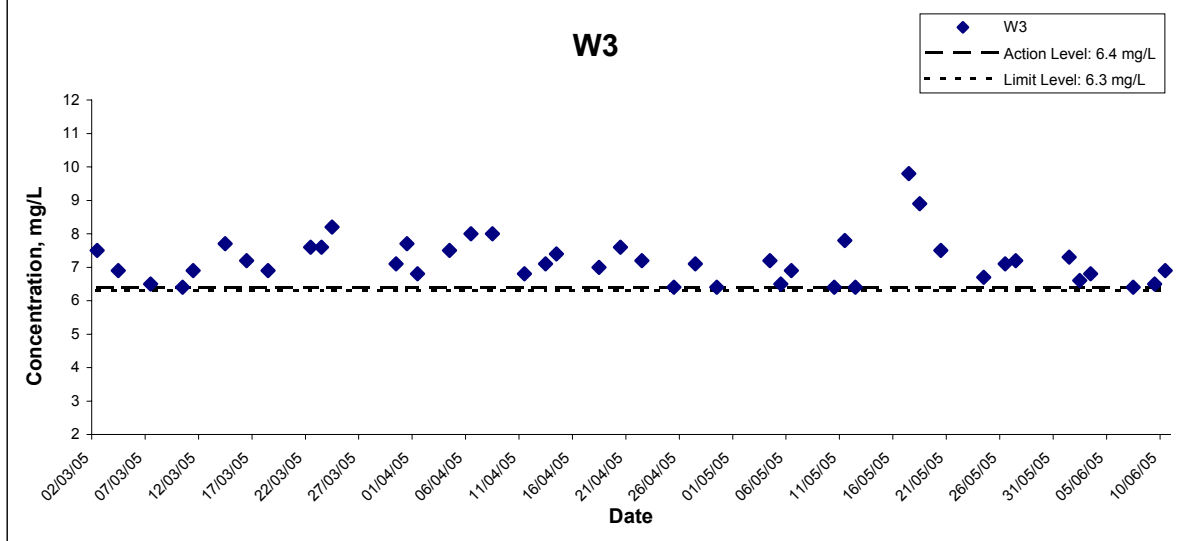
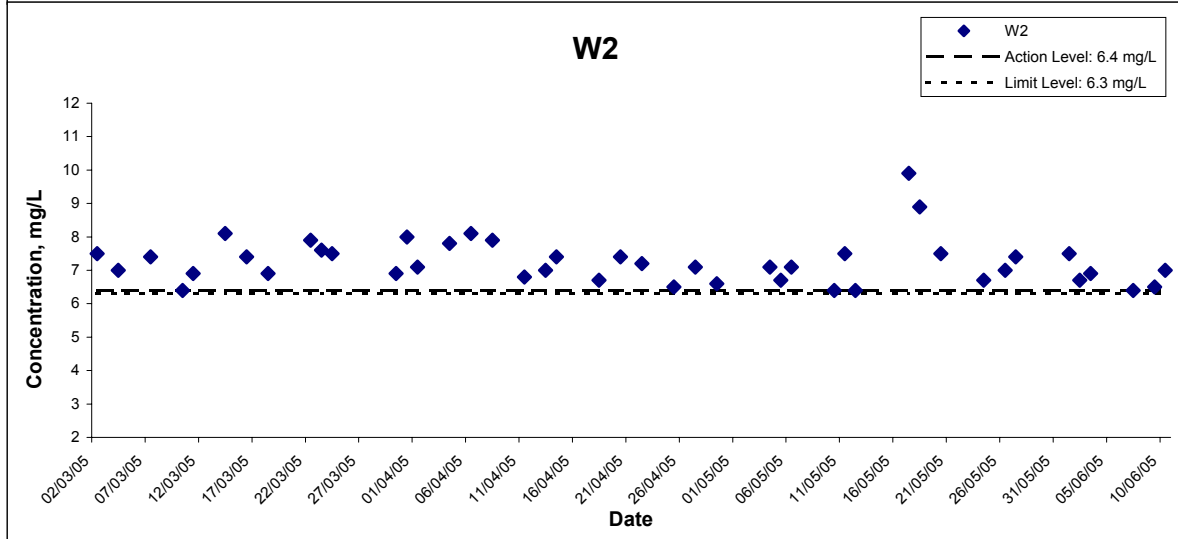
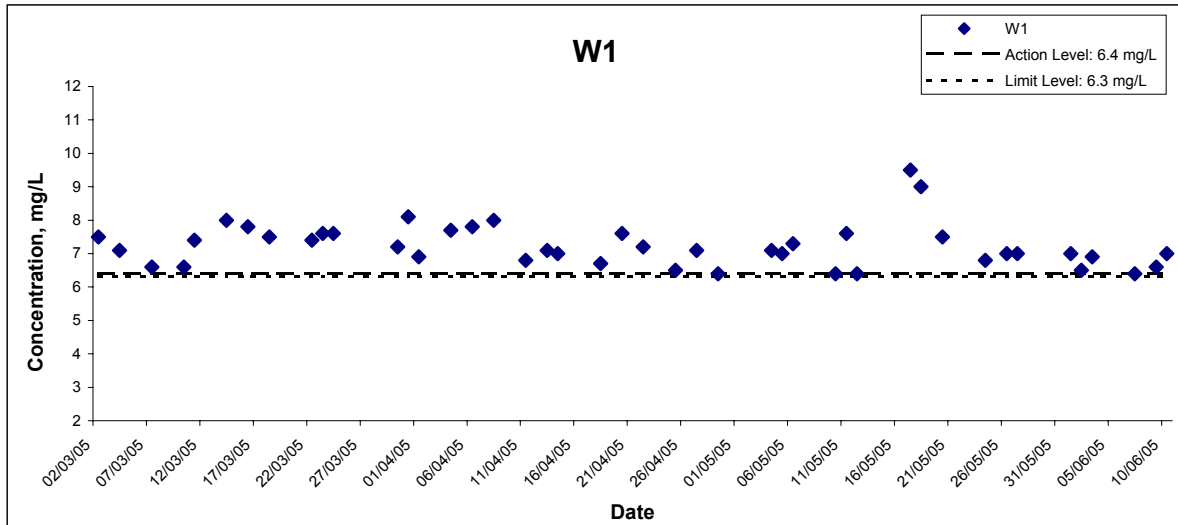
Remarks: * DA: Depth-Averaged
 ** Calm: Small or no wave; Moderate: Between calm and rough; Rough : White capped or rougher
 *** Cancelled due to Thunderstorm Warning

Dissolved Oxygen (Surface & Middle) at Mid-Ebb Tide



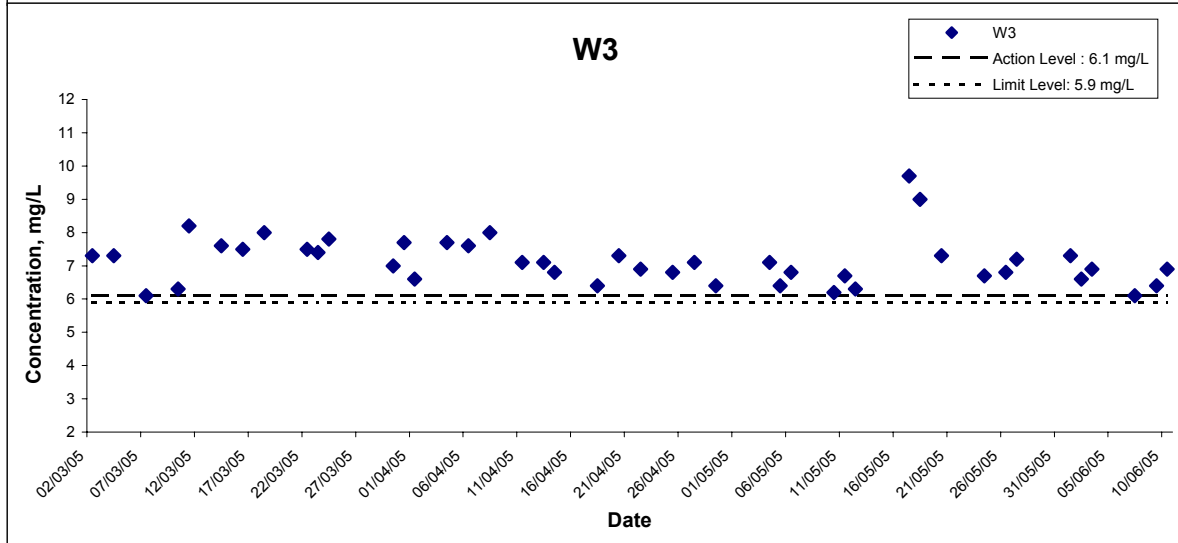
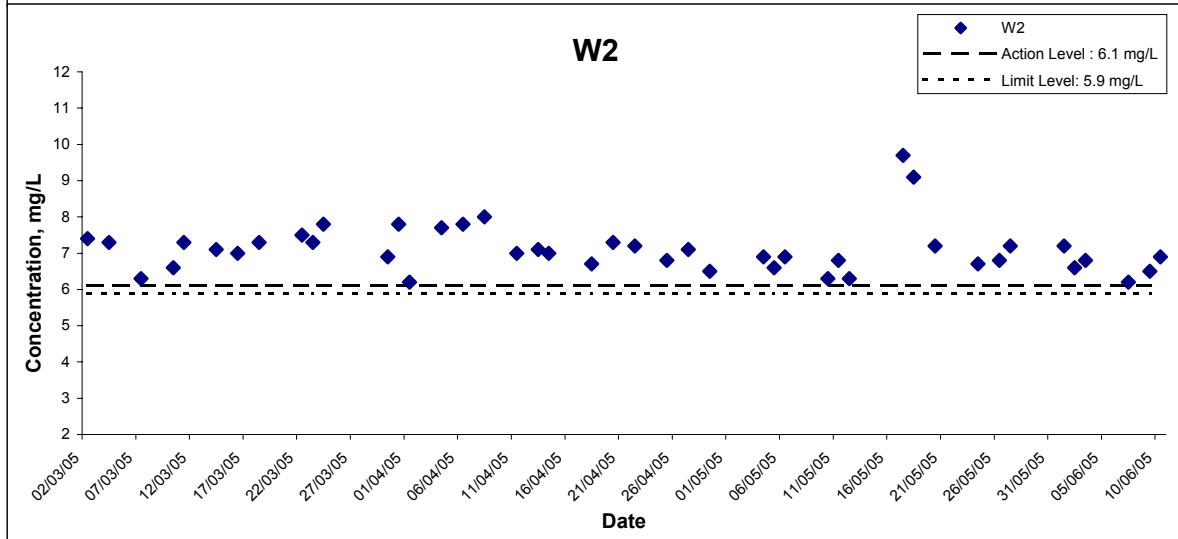
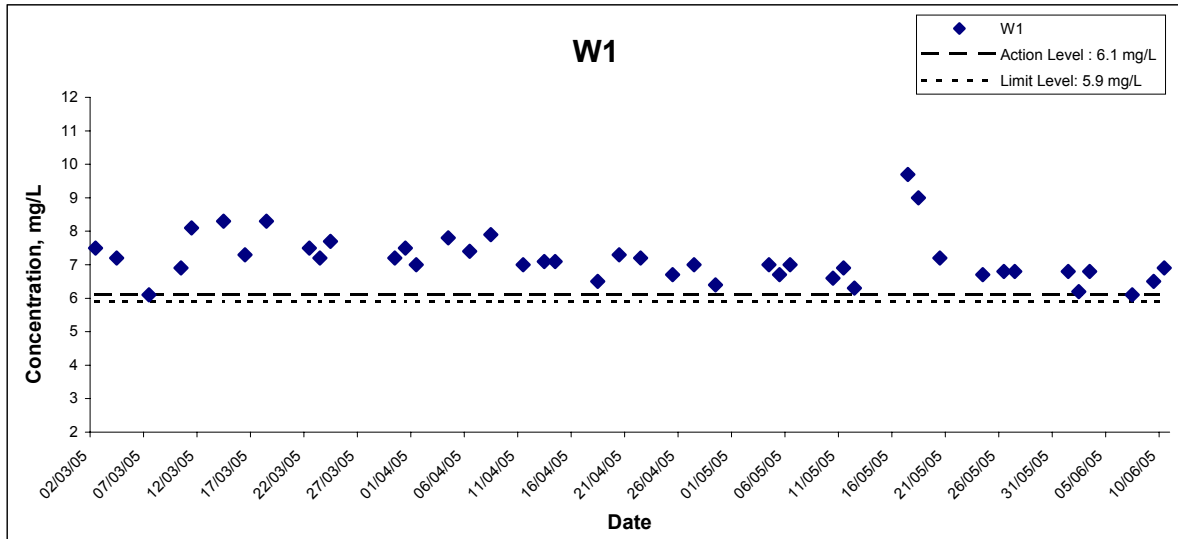
Title Contract No.EP/SP/40/02 Low Level Radioactive Waste Storage Facility at Siu A Chau Graphical Presentation of Water Quality Monitoring Results	Scale N.T.S	Project No. HW3025	
	Date Jun 05	Appendix F	

Dissolved Oxygen (Surface & Middle) at Mid-Flood Tide



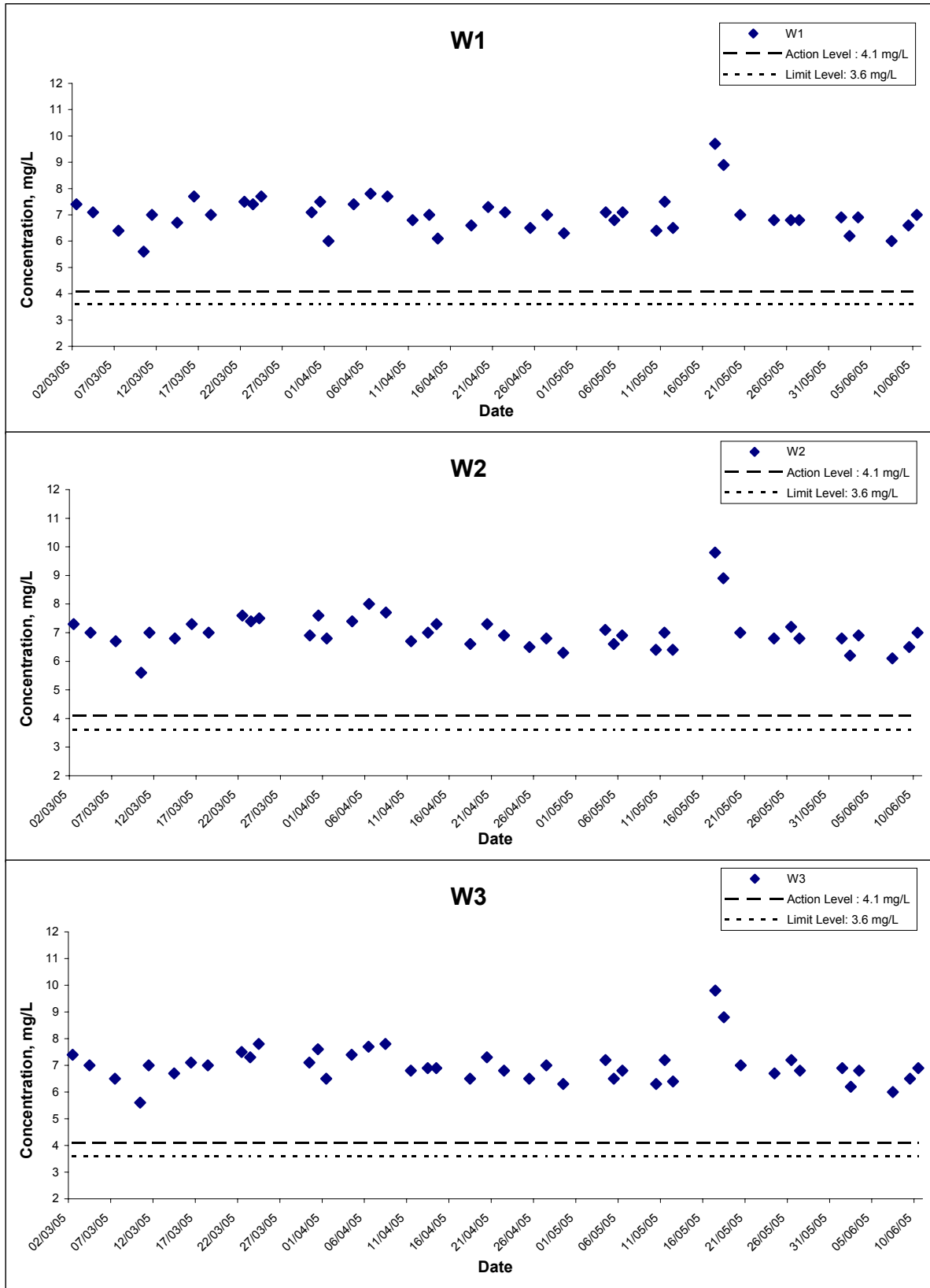
Title Contract No.EP/SP/40/02 Low Level Radioactive Waste Storage Facility at Siu A Chau Graphical Presentation of Water Quality Monitoring Results	Scale N.T.S	Project No. HW3025	
	Date Jun 05	Appendix F	

Dissolved Oxygen (Bottom) at Mid-Ebb Tide



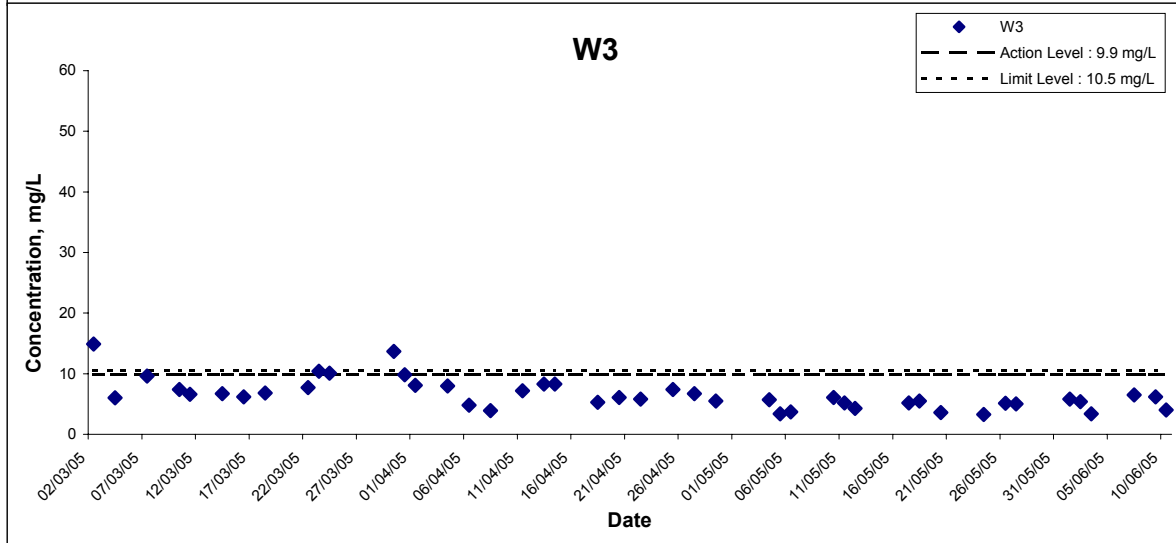
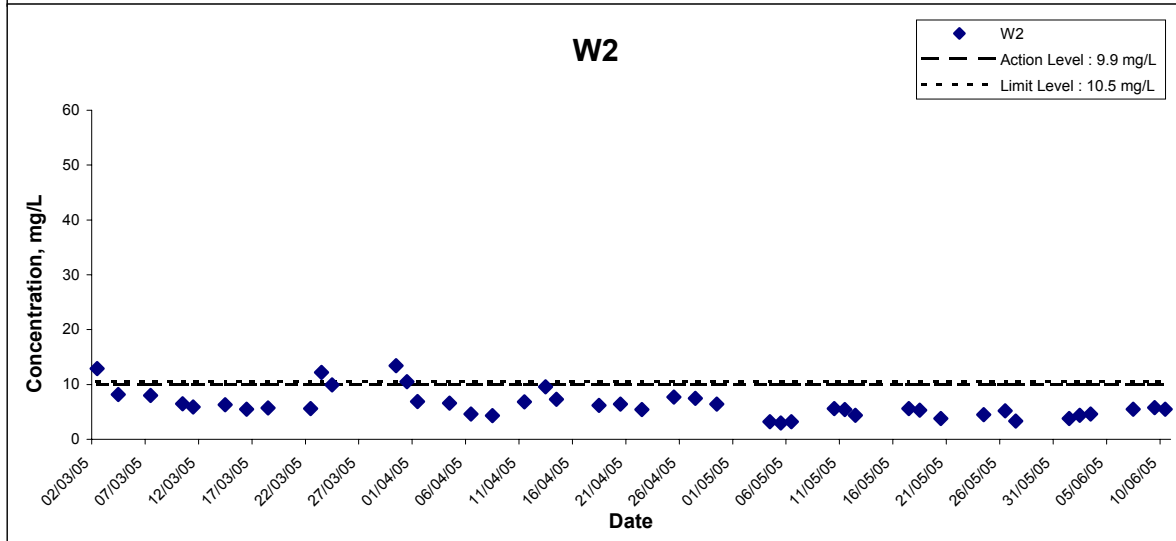
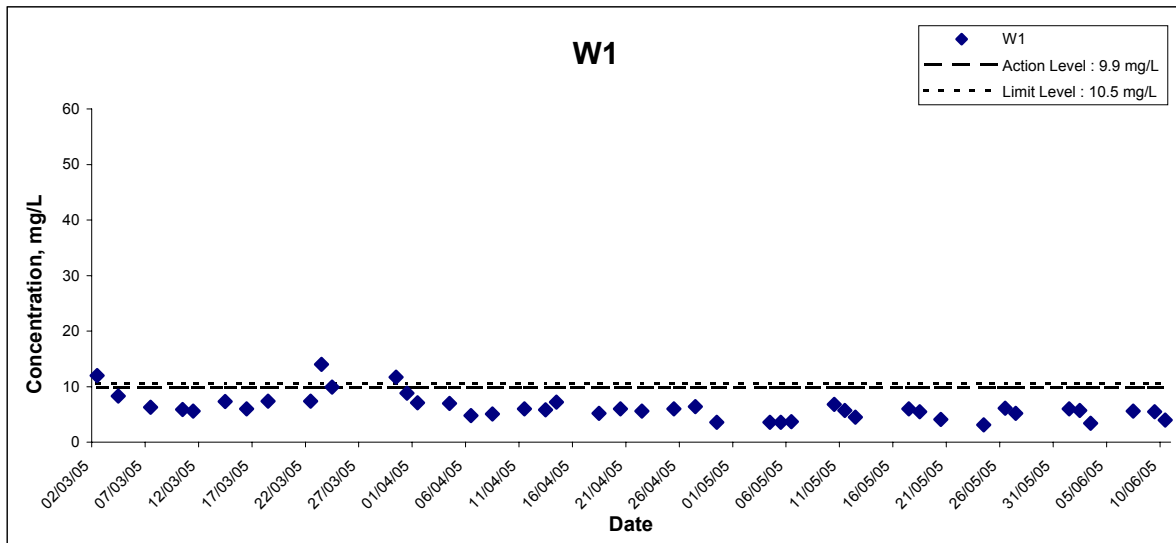
Title Contract No.EP/SP/40/02 Low Level Radioactive Waste Storage Facility at Siu A Chau Graphical Presentation of Water Quality Monitoring Results	Scale	N.T.S	Project No.	HW3025	CINOTECH
	Date	Jun 05	Appendix	F	

Dissolved Oxygen (Bottom) at Mid-Flood Tide



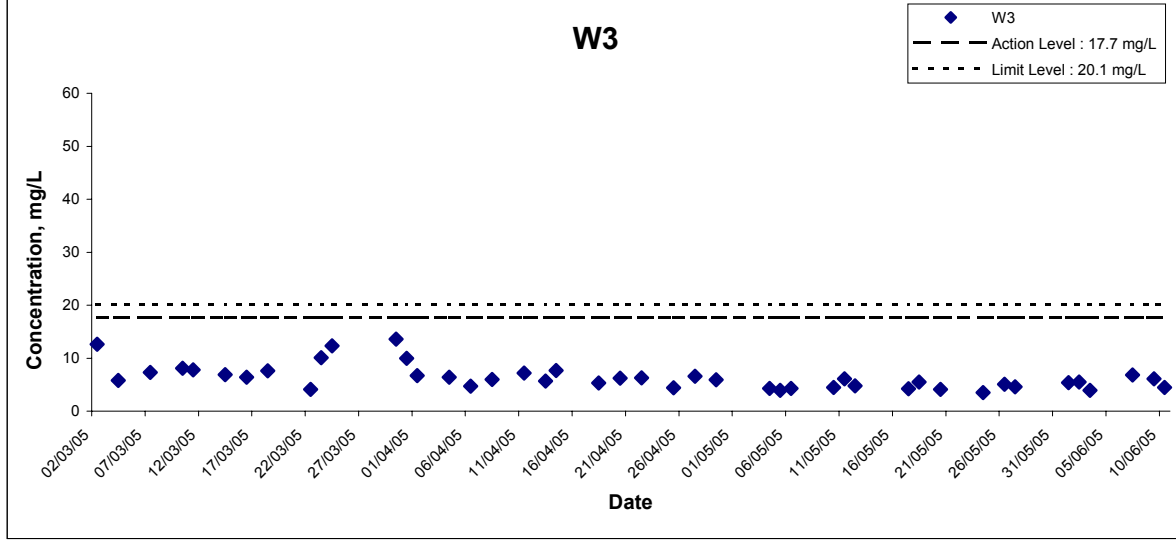
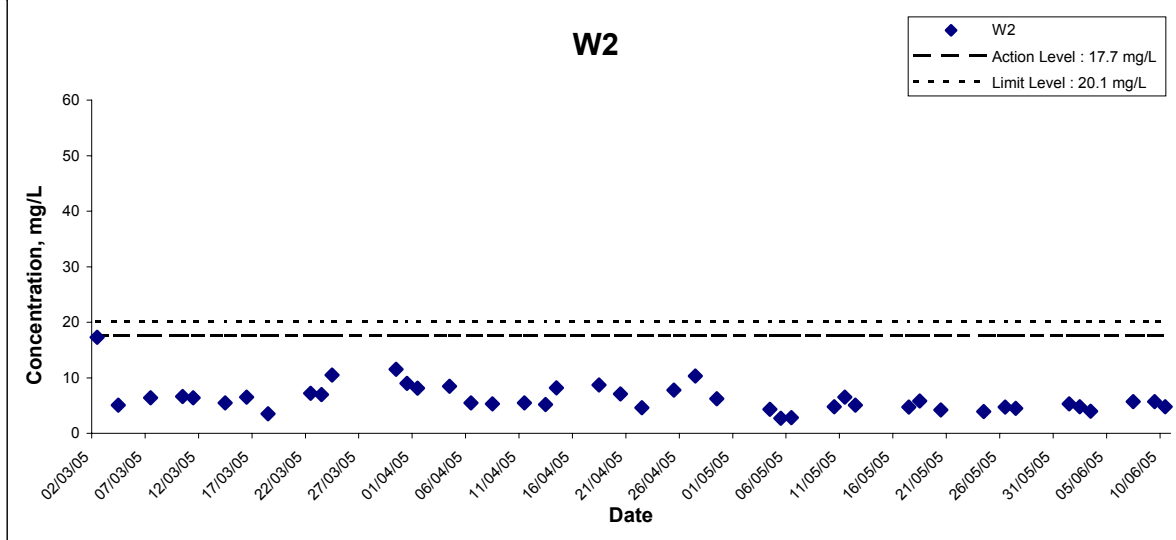
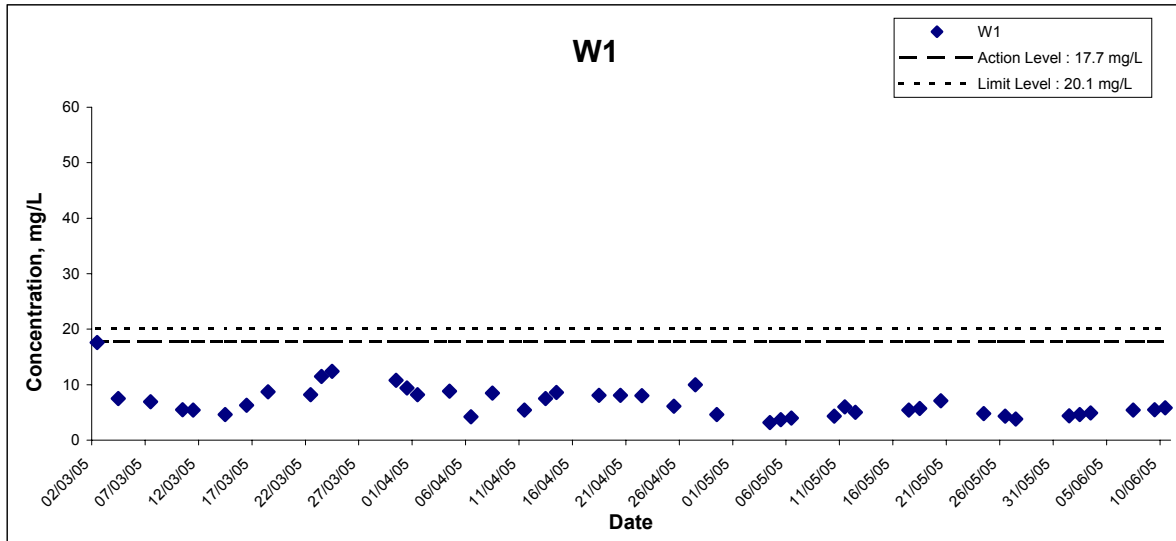
Title Contract No.EP/SP/40/02 Low Level Radioactive Waste Storage Facility at Siu A Chau Graphical Presentation of Water Quality Monitoring Results	Scale N.T.S	Project No. HW3025	
	Date Jun 05	Appendix F	

Suspended Solids at Mid-Ebb Tide



Title Contract No.EP/SP/40/02 Low Level Radioactive Waste Storage Facility at Siu A Chau Graphical Presentation of Water Quality Monitoring Results	Scale N.T.S	Project No. HW3025	
	Date Jun 05	Appendix F	

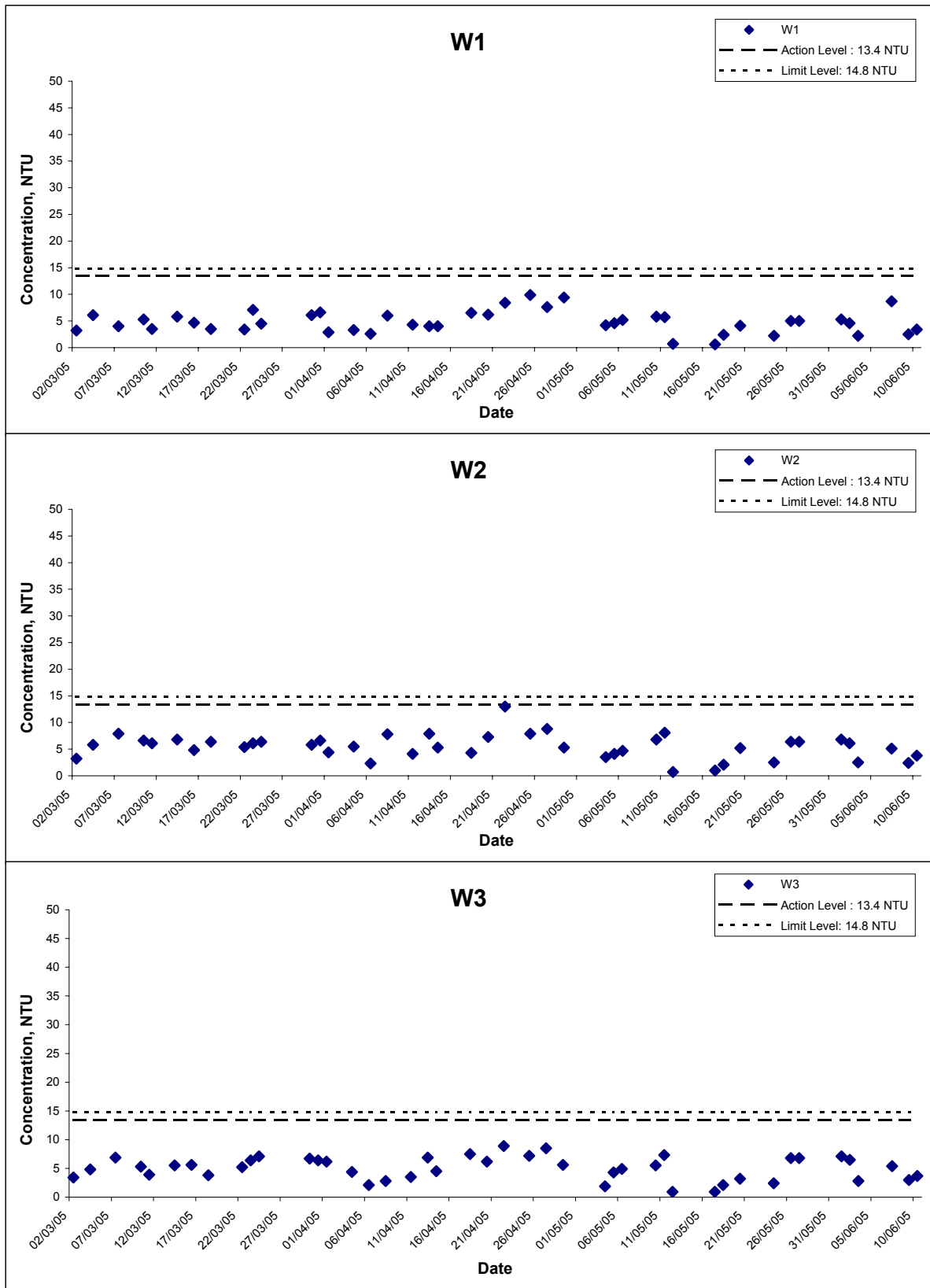
Suspended Solids at Mid-Flood Tide



Title Contract No.EP/SP/40/02 Low Level Radioactive Waste Storage Facility at Siu A Chau Graphical Presentation of Water Quality Monitoring Results	Scale	N.T.S	Project No.	HW3025
	Date	Jun 05	Appendix	F

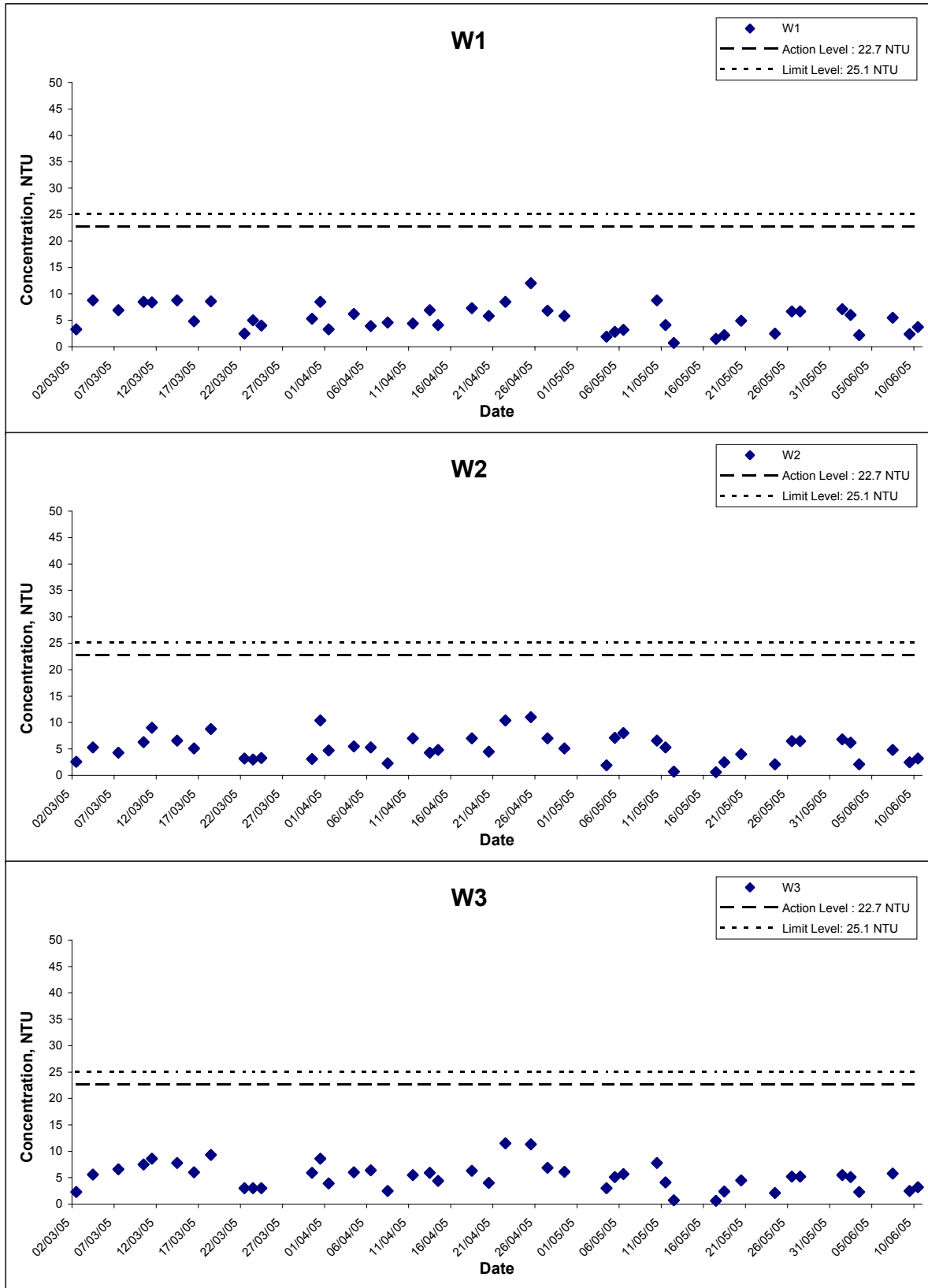


Turbidity at Mid-Ebb Tide



Title Contract No. EP/SP/40/02 Low Level Radioactive Waste Storage Facility at Siu A Chau Graphical Presentation of Water Quality Monitoring Results	Scale	N.T.S	Project No.	HW3025	CINOTECH
	Date	Jun 05	Appendix	F	

Turbidity at Mid-Flood Tide



Title Contract No.EP/SP/40/02 Low Level Radioactive Waste Storage Facility at Siu A Chau Graphical Presentation of Water Quality Monitoring Results	Scale	N.T.S	Project No.	HW3025	CINOTECH
	Date	Jun 05	Appendix	F	

12-Hours Continuous Water Quality Monitoring Results

Location	Date	Time	Temperature, °C	Conductivity, ms/cm	DO saturation, %	Dissolved Oxygen, mg/L	Turbidity, NTU
WS	06/01/05	7:00:10	26.06	44.64	93.3	7.0	3.1
WS	06/01/05	7:05:10	26.04	44.65	93.3	6.9	3.5
WS	06/01/05	7:10:10	26.08	44.64	93.2	6.9	3.2
WS	06/01/05	7:15:10	26.09	44.66	93.2	6.9	3.3
WS	06/01/05	7:20:10	26.09	44.66	92.9	6.9	3.7
WS	06/01/05	7:25:10	26.09	44.64	92.9	6.9	3.5
WS	06/01/05	7:30:10	26.07	44.57	92.9	6.9	3.5
WS	06/01/05	7:35:10	26.08	44.65	92.9	6.9	3.3
WS	06/01/05	7:40:10	26.07	44.70	92.9	6.9	2.9
WS	06/01/05	7:45:10	26.09	44.70	93.7	6.9	3.0
WS	06/01/05	7:50:10	26.09	44.69	93.5	6.9	3.1
WS	06/01/05	7:55:10	26.09	44.70	93.4	6.9	5.0
WS	06/01/05	8:00:10	26.08	44.70	93.4	6.9	3.5
WS	06/01/05	8:05:10	26.08	44.72	93.4	6.9	3.1
WS	06/01/05	8:10:10	26.09	44.71	93.4	6.9	3.6
WS	06/01/05	8:15:10	26.09	44.69	93.4	6.9	3.1
WS	06/01/05	8:20:10	26.09	44.71	93.4	6.9	3.1
WS	06/01/05	8:25:10	26.09	44.69	93.3	6.9	2.9
WS	06/01/05	8:30:10	26.09	44.62	93.4	6.9	3.0
WS	06/01/05	8:35:10	26.09	44.69	93.3	6.9	2.8
WS	06/01/05	8:40:10	26.10	44.69	93.4	6.9	2.6
WS	06/01/05	8:45:10	26.09	44.68	92.9	6.9	3.5
WS	06/01/05	8:50:10	26.10	44.66	92.9	6.9	3.7
WS	06/01/05	8:55:10	26.10	44.66	96.6	6.9	3.1
WS	06/01/05	9:00:10	26.09	44.70	96.6	6.8	3.8
WS	06/01/05	9:05:10	26.10	44.66	96.5	6.8	4.1
WS	06/01/05	9:10:10	26.10	44.72	96.6	6.8	3.1
WS	06/01/05	9:15:10	26.08	44.69	96.6	6.8	3.0
WS	06/01/05	9:20:10	26.09	44.72	96.4	6.8	3.2
WS	06/01/05	9:25:10	26.09	44.86	96.4	6.8	3.1
WS	06/01/05	9:30:10	26.10	44.83	96.3	7.0	3.0
WS	06/01/05	9:35:10	26.10	44.98	96.3	7.0	3.1
WS	06/01/05	9:40:10	26.09	44.91	97.2	7.2	3.3
WS	06/01/05	9:45:10	26.10	44.88	96.9	7.1	3.7
WS	06/01/05	9:50:10	26.10	44.89	96.8	7.1	3.0
WS	06/01/05	9:55:10	26.10	44.89	96.9	7.1	3.2
WS	06/01/05	10:00:10	26.07	44.91	96.8	7.1	3.5
WS	06/01/05	10:05:10	26.09	44.90	96.8	7.0	3.1
WS	06/01/05	10:10:10	26.10	44.93	97.4	7.0	3.0
WS	06/01/05	10:15:10	26.10	44.95	97.3	7.0	3.0
WS	06/01/05	10:20:10	26.09	44.94	97.2	7.0	2.8
WS	06/01/05	10:25:10	26.10	44.90	97.2	7.0	3.3
WS	06/01/05	10:30:10	26.12	44.75	96.2	7.0	3.1
WS	06/01/05	10:35:10	26.12	44.73	96.1	7.0	3.3
WS	06/01/05	10:40:10	26.10	44.83	96.1	7.0	3.1
WS	06/01/05	10:45:10	26.10	44.83	96.0	7.0	2.9
WS	06/01/05	10:50:10	26.10	44.91	96.0	6.8	3.0
WS	06/01/05	10:55:10	26.09	44.89	95.9	6.8	2.8
WS	06/01/05	11:00:10	26.09	44.93	95.9	6.8	3.1
WS	06/01/05	11:05:10	26.10	44.93	95.9	6.8	3.0
WS	06/01/05	11:10:10	26.09	44.95	95.7	6.8	3.0
WS	06/01/05	11:15:10	26.10	45.02	95.7	6.8	3.0
WS	06/01/05	11:20:10	26.12	44.95	95.7	6.8	3.0
WS	06/01/05	11:25:10	26.12	45.03	95.6	6.8	2.9
WS	06/01/05	11:30:10	26.12	45.00	95.5	6.8	2.8
WS	06/01/05	11:35:10	26.12	44.96	95.5	6.8	3.0
WS	06/01/05	11:40:10	26.10	44.80	95.4	6.8	3.1
WS	06/01/05	11:45:10	26.10	44.80	95.3	6.8	2.8
WS	06/01/05	11:50:10	26.09	44.98	95.3	6.8	2.8
WS	06/01/05	11:55:10	26.10	45.04	95.4	6.8	2.9
WS	06/01/05	12:00:10	26.10	44.89	95.4	6.8	3.5
WS	06/01/05	12:05:10	26.12	44.88	95.3	6.8	2.8
WS	06/01/05	12:10:10	26.10	44.96	95.3	6.8	2.8
WS	06/01/05	12:15:10	26.10	44.86	95.2	6.8	2.8
WS	06/01/05	12:20:10	26.12	44.82	95.1	6.8	2.9
WS	06/01/05	12:25:10	26.10	44.80	95.1	6.8	2.9
WS	06/01/05	12:30:10	26.12	44.79	95.0	6.8	3.1
WS	06/01/05	12:35:10	26.12	44.80	95.0	6.8	3.1
WS	06/01/05	12:40:10	26.12	44.85	95.0	6.8	3.1
WS	06/01/05	12:45:10	26.12	44.80	94.9	6.8	2.9
WS	06/01/05	12:50:10	26.12	44.80	94.8	6.8	3.0
WS	06/01/05	12:55:10	26.08	45.00	94.8	6.8	2.8
WS	06/01/05	13:00:10	26.10	45.02	94.8	6.8	2.6
WS	06/01/05	13:05:10	26.10	45.00	94.8	6.8	3.5
WS	06/01/05	13:10:10	26.12	45.00	94.8	6.8	3.1

* Bold value indicated action level exceedance.
 Bold italic value indicated limit level exceedance.

12-Hours Continuous Water Quality Monitoring Results

Location	Date	Time	Temperature, °C	Conductivity, ms/cm	DO saturation, %	Dissolved Oxygen, mg/L	Turbidity, NTU
WS	06/01/05	13:15:10	26.10	44.94	94.7	6.8	2.8
WS	06/01/05	13:20:10	26.10	44.82	94.7	6.8	3.1
WS	06/01/05	13:25:10	26.12	44.75	94.6	6.8	2.8
WS	06/01/05	13:30:10	26.12	44.71	94.6	6.8	3.1
WS	06/01/05	13:35:10	26.12	44.75	94.6	6.8	3.0
WS	06/01/05	13:40:10	26.12	44.67	94.6	6.8	2.9
WS	06/01/05	13:45:10	26.12	44.88	94.4	6.7	3.0
WS	06/01/05	13:50:10	26.12	44.92	94.4	6.7	2.9
WS	06/01/05	13:55:10	26.10	45.02	94.4	6.7	2.6
WS	06/01/05	14:00:10	26.13	44.95	94.4	6.7	2.6
WS	06/01/05	14:05:10	26.10	44.93	94.4	6.7	2.9
WS	06/01/05	14:10:10	26.12	45.01	94.5	6.7	2.8
WS	06/01/05	14:15:10	26.12	45.00	94.4	6.7	2.8
WS	06/01/05	14:20:10	26.12	44.88	94.2	6.7	2.8
WS	06/01/05	14:25:10	26.12	44.85	94.4	6.7	3.1
WS	06/01/05	14:30:10	26.12	45.04	94.4	6.7	3.0
WS	06/01/05	14:35:10	26.13	44.97	94.5	6.7	4.1
WS	06/01/05	14:40:10	26.12	45.04	94.4	6.7	3.0
WS	06/01/05	14:45:10	26.12	44.94	94.5	6.7	3.0
WS	06/01/05	14:50:10	26.10	45.09	94.5	6.7	2.9
WS	06/01/05	14:55:10	26.10	45.07	94.5	6.7	2.8
WS	06/01/05	15:00:10	26.09	45.14	94.5	6.7	2.8
WS	06/01/05	15:05:10	26.13	44.89	94.5	6.7	2.9
WS	06/01/05	15:10:10	26.12	44.77	94.5	6.7	3.1
WS	06/01/05	15:15:10	26.14	44.90	94.5	6.7	3.1
WS	06/01/05	15:20:10	26.12	45.02	94.4	6.7	2.9
WS	06/01/05	15:25:10	26.13	45.06	94.4	6.7	3.0
WS	06/01/05	15:30:10	26.12	45.10	94.3	6.7	3.0
WS	06/01/05	15:35:10	26.13	45.15	94.2	6.7	3.3
WS	06/01/05	15:40:10	26.13	45.13	94.3	6.7	3.0
WS	06/01/05	15:45:10	26.13	45.07	94.2	6.7	3.0
WS	06/01/05	15:50:10	26.13	45.20	94.2	6.7	3.1
WS	06/01/05	15:55:10	26.14	45.13	94.2	6.7	2.9
WS	06/01/05	16:00:10	26.14	45.18	94.0	6.7	2.9
WS	06/01/05	16:05:10	26.13	45.17	94.0	6.7	2.8
WS	06/01/05	16:10:10	26.12	45.14	94.1	6.7	2.5
WS	06/01/05	16:15:10	26.14	45.12	94.0	6.7	2.5
WS	06/01/05	16:20:10	26.12	45.10	94.1	6.7	2.8
WS	06/01/05	16:25:10	26.13	45.09	94.0	6.7	2.9
WS	06/01/05	16:30:10	26.13	45.09	93.9	6.6	2.9
WS	06/01/05	16:35:10	26.12	45.02	93.9	6.6	3.3
WS	06/01/05	16:40:10	26.12	45.07	93.8	6.6	3.0
WS	06/01/05	16:45:10	26.12	45.05	93.8	6.6	3.0
WS	06/01/05	16:50:10	26.12	45.02	93.8	6.6	2.8
WS	06/01/05	16:55:10	26.12	45.06	93.8	6.6	3.1
WS	06/01/05	17:00:10	26.10	45.01	93.7	6.6	3.1
WS	06/01/05	17:05:10	26.10	45.03	93.7	6.6	2.8
WS	06/01/05	17:10:10	26.10	45.05	98.8	6.6	2.5
WS	06/01/05	17:15:10	26.10	44.65	98.3	6.6	2.8
WS	06/01/05	17:20:10	26.12	44.66	98.1	6.6	2.5
WS	06/01/05	17:25:10	26.12	44.70	98.1	6.6	2.5
WS	06/01/05	17:30:10	26.10	44.66	98.0	6.6	2.8
WS	06/01/05	17:35:10	26.10	44.72	97.8	6.6	3.1
WS	06/01/05	17:40:10	26.10	44.69	97.8	6.6	3.5
WS	06/01/05	17:45:10	26.12	44.72	97.7	6.6	3.7
WS	06/01/05	17:50:10	26.12	44.86	97.6	6.6	3.2
WS	06/01/05	17:55:10	26.12	44.83	97.5	6.6	3.2
WS	06/01/05	18:00:10	26.10	44.98	97.4	6.6	3.2
WS	06/01/05	18:05:10	26.10	44.91	98.7	6.6	3.2
WS	06/01/05	18:10:10	26.10	44.88	100.9	6.6	2.6
WS	06/01/05	18:15:10	26.10	44.89	100.3	6.6	2.6
WS	06/01/05	18:20:10	26.10	44.89	100.3	6.6	3.2
WS	06/01/05	18:25:10	26.10	44.91	99.8	6.6	2.6
WS	06/01/05	18:30:10	26.10	44.90	99.4	6.6	2.6
WS	06/01/05	18:35:10	26.10	45.02	99.2	6.6	3.0
WS	06/01/05	18:40:10	26.10	44.95	98.9	6.6	2.8
WS	06/01/05	18:45:10	26.12	44.93	98.9	6.6	2.6
WS	06/01/05	18:50:10	26.10	45.01	98.8	6.6	2.6
WS	06/01/05	18:55:10	26.10	45.00	98.7	6.6	2.8
WS	06/01/05	19:00:10	26.13	44.88	98.4	6.6	2.8

* Bold value indicated action level exceedance.
 Bold italic value indicated limit level exceedance.

12-Hours Continuous Water Quality Monitoring Results

Location	Date	Time	Temperature, °C	Conductivity, ms/cm	DO saturation, %	Dissolved Oxygen, mg/L	Turbidity, NTU
WS	06/02/05	7:00:16	25.67	48.88	88.1	6.6	2.9
WS	06/02/05	7:05:16	25.65	48.89	88.1	6.6	3.3
WS	06/02/05	7:10:16	25.69	48.88	88.0	6.6	3.1
WS	06/02/05	7:15:16	25.70	48.90	88.0	6.6	3.2
WS	06/02/05	7:20:16	25.70	48.90	87.8	6.6	3.5
WS	06/02/05	7:25:16	25.70	48.88	87.8	6.5	3.3
WS	06/02/05	7:30:16	25.68	48.81	87.8	6.5	3.3
WS	06/02/05	7:35:16	25.69	48.89	87.8	6.5	3.2
WS	06/02/05	7:40:16	25.68	48.95	87.8	6.5	2.7
WS	06/02/05	7:45:16	25.70	48.95	88.5	6.5	2.8
WS	06/02/05	7:50:16	25.70	48.93	88.3	6.5	2.9
WS	06/02/05	7:55:16	25.70	48.95	88.2	6.5	4.7
WS	06/02/05	8:00:16	25.69	48.95	88.2	6.5	3.3
WS	06/02/05	8:05:16	25.69	48.97	88.2	6.5	2.9
WS	06/02/05	8:10:16	25.70	48.96	88.2	6.5	3.4
WS	06/02/05	8:15:16	25.70	48.93	88.2	6.5	2.9
WS	06/02/05	8:20:16	25.70	48.96	88.2	6.5	2.9
WS	06/02/05	8:25:16	25.70	48.93	88.1	6.5	2.7
WS	06/02/05	8:30:16	25.70	48.85	88.2	6.5	2.8
WS	06/02/05	8:35:16	25.70	48.93	88.1	6.5	2.6
WS	06/02/05	8:40:16	25.71	48.93	88.2	6.5	2.5
WS	06/02/05	8:45:16	25.70	48.92	87.8	6.5	3.3
WS	06/02/05	8:50:16	25.71	48.90	87.8	6.5	3.5
WS	06/02/05	8:55:16	25.71	48.90	91.3	6.5	2.9
WS	06/02/05	9:00:16	25.70	48.95	91.3	6.5	3.6
WS	06/02/05	9:05:16	25.71	48.90	91.2	6.5	3.8
WS	06/02/05	9:10:16	25.71	48.97	91.3	6.5	2.9
WS	06/02/05	9:15:16	25.69	48.93	91.3	6.4	2.8
WS	06/02/05	9:20:16	25.70	48.97	91.1	6.4	3.1
WS	06/02/05	9:25:16	25.70	49.13	91.1	6.4	2.9
WS	06/02/05	9:30:16	25.71	49.09	91.0	6.6	2.8
WS	06/02/05	9:35:16	25.71	49.25	91.0	6.6	2.9
WS	06/02/05	9:40:16	25.70	49.17	91.8	6.8	3.2
WS	06/02/05	9:45:16	25.71	49.14	91.6	6.7	3.5
WS	06/02/05	9:50:16	25.71	49.15	91.5	6.7	2.8
WS	06/02/05	9:55:16	25.71	49.15	91.6	6.7	3.1
WS	06/02/05	10:00:16	25.68	49.17	91.5	6.7	3.3
WS	06/02/05	10:05:16	25.70	49.16	91.5	6.7	2.9
WS	06/02/05	10:10:16	25.71	49.20	92.0	6.7	2.8
WS	06/02/05	10:15:16	25.71	49.22	91.9	6.7	2.8
WS	06/02/05	10:20:16	25.70	49.21	91.8	6.6	2.6
WS	06/02/05	10:25:16	25.71	49.16	91.8	6.6	3.2
WS	06/02/05	10:30:16	25.72	49.00	90.9	6.6	2.9
WS	06/02/05	10:35:16	25.72	48.98	94.7	6.6	3.2
WS	06/02/05	10:40:16	25.71	49.09	94.7	6.6	2.9
WS	06/02/05	10:45:16	25.71	49.09	94.6	6.6	2.7
WS	06/02/05	10:50:16	25.71	49.17	94.6	6.4	2.8
WS	06/02/05	10:55:16	25.70	49.15	94.5	6.4	2.6
WS	06/02/05	11:00:16	25.70	49.20	94.5	6.4	2.9
WS	06/02/05	11:05:16	25.71	49.20	94.5	6.4	2.8
WS	06/02/05	11:10:16	25.70	49.22	94.3	6.4	2.8
WS	06/02/05	11:15:16	25.71	49.30	94.3	6.4	2.8
WS	06/02/05	11:20:16	25.72	49.22	94.3	6.4	2.8
WS	06/02/05	11:25:16	25.72	49.31	94.2	6.4	2.7
WS	06/02/05	11:30:16	25.72	49.27	94.1	6.4	2.6
WS	06/02/05	11:35:16	25.72	49.23	94.1	6.4	2.8
WS	06/02/05	11:40:16	25.71	49.06	94.0	6.4	2.9
WS	06/02/05	11:45:16	25.71	49.06	93.9	6.4	2.6
WS	06/02/05	11:50:16	25.70	49.25	93.9	6.4	2.6
WS	06/02/05	11:55:16	25.71	49.32	94.0	6.4	2.7
WS	06/02/05	12:00:16	25.71	49.15	94.0	6.4	3.3
WS	06/02/05	12:05:16	25.72	49.14	93.9	6.4	2.6
WS	06/02/05	12:10:16	25.71	49.23	93.9	6.4	2.6

* Bold value indicated action level exceedance.
 Bold italic value indicated limit level exceedance.

12-Hours Continuous Water Quality Monitoring Results

Location	Date	Time	Temperature, °C	Conductivity, ms/cm	DO saturation, %	Dissolved Oxygen, mg/L	Turbidity, NTU
WS	06/02/05	12:15:16	25.71	49.13	93.8	6.4	2.6
WS	06/02/05	12:20:16	25.72	49.08	93.7	6.4	2.7
WS	06/02/05	12:25:16	25.71	49.06	93.7	6.4	2.7
WS	06/02/05	12:30:16	25.72	49.05	93.6	6.4	2.9
WS	06/02/05	12:35:16	25.72	49.06	93.6	6.4	2.9
WS	06/02/05	12:40:16	25.72	49.12	93.6	6.4	2.9
WS	06/02/05	12:45:16	25.72	49.06	93.5	6.4	2.7
WS	06/02/05	12:50:16	25.72	49.06	93.4	6.4	2.8
WS	06/02/05	12:55:16	25.69	49.27	93.4	6.4	2.6
WS	06/02/05	13:00:16	25.71	49.30	93.4	6.4	2.5
WS	06/02/05	13:05:16	25.71	49.27	93.4	6.4	3.3
WS	06/02/05	13:10:16	25.72	49.27	93.4	6.4	2.9
WS	06/02/05	13:15:16	25.71	49.21	93.3	6.4	2.6
WS	06/02/05	13:20:16	25.71	49.08	93.3	6.4	2.9
WS	06/02/05	13:25:16	25.72	49.00	93.2	6.4	2.6
WS	06/02/05	13:30:16	25.72	48.96	93.2	6.4	2.9
WS	06/02/05	13:35:16	25.72	49.00	93.2	6.4	2.8
WS	06/02/05	13:40:16	25.72	48.91	93.2	6.4	2.7
WS	06/02/05	13:45:16	25.72	49.14	93.0	6.4	2.8
WS	06/02/05	13:50:16	25.72	49.18	93.0	6.4	2.7
WS	06/02/05	13:55:16	25.71	49.30	93.0	6.4	2.5
WS	06/02/05	14:00:16	25.73	49.22	93.0	6.4	2.5
WS	06/02/05	14:05:16	25.71	49.20	93.0	6.3	2.7
WS	06/02/05	14:10:16	25.72	49.29	93.1	6.3	2.6
WS	06/02/05	14:15:16	25.72	49.27	93.0	6.4	2.6
WS	06/02/05	14:20:16	25.72	49.14	92.8	6.3	2.6
WS	06/02/05	14:25:16	25.72	49.12	93.0	6.3	2.9
WS	06/02/05	14:30:16	25.72	49.32	93.0	6.3	2.8
WS	06/02/05	14:35:16	25.73	49.24	93.1	6.3	3.8
WS	06/02/05	14:40:16	25.72	49.32	93.0	6.3	2.8
WS	06/02/05	14:45:16	25.72	49.21	93.1	6.3	2.8
WS	06/02/05	14:50:16	25.71	49.38	93.1	6.3	2.7
WS	06/02/05	14:55:16	25.71	49.35	93.1	6.3	2.6
WS	06/02/05	15:00:16	25.70	49.43	93.1	6.3	2.6
WS	06/02/05	15:05:16	25.73	49.15	91.2	6.3	2.7
WS	06/02/05	15:10:16	25.72	49.02	91.2	6.3	2.9
WS	06/02/05	15:15:16	25.74	49.16	91.2	6.3	2.9
WS	06/02/05	15:20:16	25.72	49.30	91.1	6.3	2.7
WS	06/02/05	15:25:16	25.73	49.34	91.1	6.3	2.8
WS	06/02/05	15:30:16	25.72	49.39	91.0	6.3	2.8
WS	06/02/05	15:35:16	25.73	49.44	90.9	6.3	3.2
WS	06/02/05	15:40:16	25.73	49.42	91.0	6.3	2.8
WS	06/02/05	15:45:16	25.73	49.35	90.9	6.3	2.8
WS	06/02/05	15:50:16	25.73	49.49	90.9	6.3	2.9
WS	06/02/05	15:55:16	25.74	49.42	90.9	6.3	2.7
WS	06/02/05	16:00:16	25.74	49.47	90.7	6.3	2.7
WS	06/02/05	16:05:16	25.73	49.46	90.7	6.3	2.6
WS	06/02/05	16:10:16	25.72	49.43	90.8	6.3	2.4
WS	06/02/05	16:15:16	25.74	49.41	90.7	6.3	2.4
WS	06/02/05	16:20:16	25.72	49.39	90.8	6.3	2.6
WS	06/02/05	16:25:16	25.73	49.38	90.7	6.3	2.7
WS	06/02/05	16:30:16	25.73	49.38	90.6	6.3	2.7
WS	06/02/05	16:35:16	25.72	49.30	90.6	6.3	3.2
WS	06/02/05	16:40:16	25.72	49.35	90.5	6.3	2.8
WS	06/02/05	16:45:16	25.72	49.33	90.5	6.3	2.8
WS	06/02/05	16:50:16	25.72	49.30	90.5	6.3	2.6
WS	06/02/05	16:55:16	25.72	49.34	90.5	6.3	2.9
WS	06/02/05	17:00:16	25.71	49.29	90.4	6.2	2.9
WS	06/02/05	17:05:16	25.71	49.31	90.4	6.2	2.6
WS	06/02/05	17:10:16	25.71	49.33	95.3	6.2	2.4
WS	06/02/05	17:15:16	25.71	48.89	94.8	6.2	2.6
WS	06/02/05	17:20:16	25.72	48.90	94.6	6.2	2.4
WS	06/02/05	17:25:16	25.72	48.95	94.6	6.2	2.4
WS	06/02/05	17:30:16	25.71	48.90	94.5	6.3	2.6
WS	06/02/05	17:35:16	25.71	48.97	94.3	6.3	2.9
WS	06/02/05	17:40:16	25.71	48.93	94.3	6.3	3.3
WS	06/02/05	17:45:16	25.72	48.97	94.2	6.3	3.5
WS	06/02/05	17:50:16	25.72	49.13	94.1	6.3	3.1
WS	06/02/05	17:55:16	25.72	49.09	94.0	6.2	3.1
WS	06/02/05	18:00:16	25.71	49.25	94.0	6.2	3.1
WS	06/02/05	18:05:16	25.71	49.17	95.2	6.2	3.1
WS	06/02/05	18:10:16	25.71	49.14	97.4	6.2	2.5
WS	06/02/05	18:15:16	25.71	49.15	96.8	6.2	2.5
WS	06/02/05	18:20:16	25.71	49.15	96.8	6.2	3.1
WS	06/02/05	18:25:16	25.71	49.17	96.3	6.2	2.5

* Bold value indicated action level exceedance.
 Bold italic value indicated limit level exceedance.

12-Hours Continuous Water Quality Monitoring Results

Location	Date	Time	Temperature, °C	Conductivity, ms/cm	DO saturation, %	Dissolved Oxygen, mg/L	Turbidity, NTU
WS	06/02/05	18:30:16	25.71	49.16	95.9	6.2	2.5
WS	06/02/05	18:35:16	25.71	49.30	95.7	6.2	2.8
WS	06/02/05	18:40:16	25.71	49.22	95.4	6.2	2.6
WS	06/02/05	18:45:16	25.72	49.20	95.4	6.2	2.5
WS	06/02/05	18:50:16	25.71	49.29	95.3	6.2	2.5
WS	06/02/05	18:55:16	25.71	49.27	95.2	6.2	2.6
WS	06/02/05	19:00:16	25.73	49.14	94.9	6.2	2.6

* Bold value indicated action level exceedance.
 Bold italic value indicated limit level exceedance.

12-Hours Continuous Water Quality Monitoring Results

Location	Date	Time	Temperature, °C	Conductivity, ms/cm	DO saturation, %	Dissolved Oxygen, mg/L	Turbidity, NTU
WS	06/03/05	7:00:05	26.24	45.01	98.9	6.9	1.0
WS	06/03/05	7:05:05	26.24	45.02	98.9	6.9	1.0
WS	06/03/05	7:10:05	26.24	45.03	98.7	6.9	0.9
WS	06/03/05	7:15:05	26.23	45.10	98.7	6.9	0.8
WS	06/03/05	7:20:05	26.23	45.07	98.6	6.8	1.0
WS	06/03/05	7:25:05	26.23	45.08	98.6	6.9	1.0
WS	06/03/05	7:30:05	26.24	45.02	98.4	6.8	0.9
WS	06/03/05	7:35:05	26.23	45.02	98.5	6.8	0.8
WS	06/03/05	7:40:05	26.24	44.94	97.8	6.8	0.9
WS	06/03/05	7:45:05	26.24	44.94	97.8	6.8	0.9
WS	06/03/05	7:50:05	26.24	44.95	97.6	6.8	1.3
WS	06/03/05	7:55:05	26.24	45.00	97.8	6.8	1.1
WS	06/03/05	8:00:05	26.26	44.88	97.6	6.8	1.3
WS	06/03/05	8:05:05	26.26	44.88	97.6	6.8	1.4
WS	06/03/05	8:10:05	26.25	45.01	97.9	6.8	1.2
WS	06/03/05	8:15:05	26.25	45.03	98.0	6.8	1.3
WS	06/03/05	8:20:05	26.24	45.05	98.3	6.8	1.2
WS	06/03/05	8:25:05	26.24	45.04	98.3	6.8	1.2
WS	06/03/05	8:30:05	26.25	45.04	98.3	6.8	1.8
WS	06/03/05	8:35:05	26.25	45.07	98.5	6.8	1.0
WS	06/03/05	8:40:05	26.25	45.06	98.4	6.8	1.2
WS	06/03/05	8:45:05	26.25	45.06	98.4	6.8	1.2
WS	06/03/05	8:50:05	26.24	45.09	98.5	6.8	1.2
WS	06/03/05	8:55:05	26.25	45.04	98.4	6.8	1.2
WS	06/03/05	9:00:05	26.24	45.07	98.4	6.8	1.2
WS	06/03/05	9:05:05	26.26	44.98	98.3	6.8	1.5
WS	06/03/05	9:10:05	26.27	44.88	97.9	6.8	1.7
WS	06/03/05	9:15:05	26.26	44.95	97.8	6.8	2.0
WS	06/03/05	9:20:05	26.27	44.92	98.2	6.8	1.6
WS	06/03/05	9:25:05	26.27	44.82	97.8	6.8	2.0
WS	06/03/05	9:30:05	26.26	44.91	97.8	6.8	2.1
WS	06/03/05	9:35:05	26.25	44.94	97.9	6.8	1.8
WS	06/03/05	9:40:05	26.26	44.88	97.7	6.8	2.5
WS	06/03/05	9:45:05	26.25	44.91	97.3	6.8	3.2
WS	06/03/05	9:50:05	26.26	44.82	97.3	6.8	2.3
WS	06/03/05	9:55:05	26.24	45.03	97.6	6.8	2.2
WS	06/03/05	10:00:05	26.23	45.15	98.1	6.8	1.9
WS	06/03/05	10:05:05	26.23	45.13	98.0	6.8	1.7
WS	06/03/05	10:10:05	26.24	45.09	97.9	6.8	2.0
WS	06/03/05	10:15:05	26.25	44.93	97.9	6.8	2.0
WS	06/03/05	10:20:05	26.23	45.20	97.9	6.8	2.0
WS	06/03/05	10:25:05	26.26	44.88	98.0	6.8	1.5
WS	06/03/05	10:30:05	26.28	44.82	98.1	6.8	1.4
WS	06/03/05	10:35:05	26.28	44.82	98.1	6.8	1.3
WS	06/03/05	10:40:05	26.28	44.82	98.1	6.8	1.4
WS	06/03/05	10:45:05	26.27	44.85	98.1	6.8	1.3
WS	06/03/05	10:50:05	26.27	44.86	98.2	6.8	1.3
WS	06/03/05	10:55:05	26.28	44.82	98.3	6.8	1.6
WS	06/03/05	11:00:05	26.27	44.85	98.3	6.8	1.3
WS	06/03/05	11:05:05	26.28	44.84	98.3	6.8	1.3
WS	06/03/05	11:10:05	26.28	44.84	98.4	6.8	1.3
WS	06/03/05	11:15:05	26.27	44.88	98.6	6.8	1.3
WS	06/03/05	11:20:05	26.28	44.85	98.5	6.8	1.4
WS	06/03/05	11:25:05	26.28	44.84	98.5	6.8	1.3
WS	06/03/05	11:30:05	26.28	44.82	98.6	6.8	1.5
WS	06/03/05	11:35:05	26.29	44.80	98.6	6.8	1.4
WS	06/03/05	11:40:05	26.29	44.80	98.6	6.8	1.5
WS	06/03/05	11:45:05	26.29	44.80	98.7	6.9	1.4
WS	06/03/05	11:50:05	26.29	44.80	98.6	6.9	1.5
WS	06/03/05	11:55:05	26.29	44.82	98.6	6.8	1.4
WS	06/03/05	12:00:05	26.29	44.80	98.6	6.8	1.6
WS	06/03/05	12:05:05	26.29	44.80	98.6	6.8	1.5
WS	06/03/05	12:10:05	26.29	44.84	98.6	6.8	1.5
WS	06/03/05	12:15:05	26.28	44.85	98.6	6.8	1.5
WS	06/03/05	12:20:05	26.28	44.86	98.6	6.8	1.7
WS	06/03/05	12:25:05	26.28	44.87	98.6	6.8	1.5
WS	06/03/05	12:30:05	26.28	44.86	98.6	6.8	1.4
WS	06/03/05	12:35:05	26.27	44.94	98.6	6.8	1.4
WS	06/03/05	12:40:05	26.27	44.93	98.6	6.8	1.4
WS	06/03/05	12:45:05	26.28	44.90	98.6	6.8	1.4
WS	06/03/05	12:50:05	26.27	44.95	98.6	6.8	1.3
WS	06/03/05	12:55:05	26.28	44.94	98.6	6.8	1.4
WS	06/03/05	13:00:05	26.27	44.96	98.6	6.8	1.4
WS	06/03/05	13:05:05	26.27	44.97	98.6	6.8	1.3
WS	06/03/05	13:10:05	26.27	45.00	98.6	6.8	1.5

* Bold value indicated action level exceedance.
 Bold italic value indicated limit level exceedance.

12-Hours Continuous Water Quality Monitoring Results

Location	Date	Time	Temperature, °C	Conductivity, ms/cm	DO saturation, %	Dissolved Oxygen, mg/L	Turbidity, NTU
WS	06/03/05	13:15:05	26.26	45.05	98.7	6.9	1.2
WS	06/03/05	13:20:05	26.26	45.05	98.6	6.8	1.6
WS	06/03/05	13:25:05	26.26	45.08	98.7	6.8	1.2
WS	06/03/05	13:30:05	26.25	45.12	98.7	6.8	1.3
WS	06/03/05	13:35:05	26.26	45.11	98.6	6.8	1.0
WS	06/03/05	13:40:05	26.25	45.13	98.5	6.8	1.0
WS	06/03/05	13:45:05	26.25	45.14	98.5	6.8	1.1
WS	06/03/05	13:50:05	26.24	45.20	98.5	6.8	1.2
WS	06/03/05	13:55:05	26.23	45.23	98.4	6.8	1.4
WS	06/03/05	14:00:05	26.23	45.24	98.4	6.8	1.1
WS	06/03/05	14:05:05	26.23	45.24	98.3	6.8	1.1
WS	06/03/05	14:10:05	26.23	45.24	98.4	6.8	1.0
WS	06/03/05	14:15:05	26.23	45.25	98.3	6.8	1.0
WS	06/03/05	14:20:05	26.23	45.27	98.3	6.8	1.1
WS	06/03/05	14:25:05	26.23	45.26	98.3	6.8	1.9
WS	06/03/05	14:30:05	26.24	45.22	98.2	6.8	1.4
WS	06/03/05	14:35:05	26.23	45.26	98.2	6.8	1.5
WS	06/03/05	14:40:05	26.24	45.22	98.2	6.8	1.6
WS	06/03/05	14:45:05	26.23	45.27	98.3	6.8	1.0
WS	06/03/05	14:50:05	26.23	45.24	98.3	6.8	1.4
WS	06/03/05	14:55:05	26.24	45.22	98.3	6.8	1.3
WS	06/03/05	15:00:05	26.23	45.24	98.4	6.8	1.7
WS	06/03/05	15:05:05	26.24	45.22	98.4	6.8	1.2
WS	06/03/05	15:10:05	26.24	45.21	98.4	6.8	1.1
WS	06/03/05	15:15:05	26.24	45.20	98.3	6.8	1.3
WS	06/03/05	15:20:05	26.24	45.19	98.3	6.8	1.2
WS	06/03/05	15:25:05	26.25	45.17	98.5	6.8	1.5
WS	06/03/05	15:30:05	26.25	45.17	98.4	6.8	1.1
WS	06/03/05	15:35:05	26.24	45.19	98.4	6.8	1.1
WS	06/03/05	15:40:05	26.25	45.16	98.4	6.8	1.2
WS	06/03/05	15:45:05	26.25	45.16	98.3	6.8	1.2
WS	06/03/05	15:50:05	26.25	45.15	98.4	6.8	1.2
WS	06/03/05	15:55:05	26.25	45.15	98.4	6.8	1.1
WS	06/03/05	16:00:05	26.26	45.13	98.5	6.8	1.3
WS	06/03/05	16:05:05	26.26	45.12	98.5	6.8	1.3
WS	06/03/05	16:10:05	26.26	45.12	98.4	6.8	1.2
WS	06/03/05	16:15:05	26.27	45.11	98.5	6.8	1.2
WS	06/03/05	16:20:05	26.27	45.11	98.5	6.8	1.3
WS	06/03/05	16:25:05	26.28	45.10	98.6	6.8	1.0
WS	06/03/05	16:30:05	26.25	45.11	98.4	6.8	1.1
WS	06/03/05	16:35:05	26.26	45.09	98.3	6.8	1.2
WS	06/03/05	16:40:05	26.25	45.09	98.2	6.8	1.3
WS	06/03/05	16:45:05	26.26	45.08	98.1	6.8	1.2
WS	06/03/05	16:50:05	26.28	45.04	98.1	6.8	1.8
WS	06/03/05	16:55:05	26.27	45.03	98.4	6.8	1.1
WS	06/03/05	17:00:05	26.27	45.03	98.2	6.8	1.4
WS	06/03/05	17:05:05	26.27	45.04	98.2	6.8	1.2
WS	06/03/05	17:10:05	26.27	45.03	98.1	6.8	1.1
WS	06/03/05	17:15:05	26.28	45.01	98.1	6.8	1.2
WS	06/03/05	17:20:05	26.28	45.00	98.2	6.8	1.2
WS	06/03/05	17:25:05	26.30	44.98	98.2	6.8	1.1
WS	06/03/05	17:30:05	26.33	44.94	98.5	6.8	1.4
WS	06/03/05	17:35:05	26.34	44.93	99.1	6.9	1.2
WS	06/03/05	17:40:05	26.30	44.95	98.6	6.8	1.3
WS	06/03/05	17:45:05	26.31	44.92	98.3	6.8	1.4
WS	06/03/05	17:50:05	26.29	44.97	98.3	6.8	1.2
WS	06/03/05	17:55:05	26.34	44.92	98.4	6.8	1.2
WS	06/03/05	18:00:05	26.37	44.90	99.1	6.9	1.2
WS	06/03/05	18:05:05	26.30	44.99	98.6	6.8	1.2
WS	06/03/05	18:10:05	26.30	45.00	98.4	6.8	1.0
WS	06/03/05	18:15:05	26.29	45.01	98.1	6.8	1.4
WS	06/03/05	18:20:05	26.29	45.02	98.0	6.8	1.4
WS	06/03/05	18:25:05	26.28	45.03	98.1	6.8	1.5
WS	06/03/05	18:30:05	26.28	45.03	97.9	6.8	1.4
WS	06/03/05	18:35:05	26.29	45.01	98.0	6.8	1.4
WS	06/03/05	18:40:05	26.28	45.04	97.9	6.8	1.2
WS	06/03/05	18:45:05	26.27	45.06	97.9	6.8	1.4
WS	06/03/05	18:50:05	26.34	44.92	98.4	6.8	1.2
WS	06/03/05	18:55:05	26.37	44.90	99.1	6.9	1.2
WS	06/03/05	19:00:05	26.30	44.99	98.6	6.8	1.2

* Bold value indicated action level exceedance.
 Bold italic value indicated limit level exceedance.

12-Hours Continuous Water Quality Monitoring Results

Location	Date	Time	Temperature, °C	Conductivity, ms/cm	DO saturation, %	Dissolved Oxygen, mg/L	Turbidity, NTU
WS	06/07/05	7:00:20	24.21	49.75	104.6	7.9	6.5
WS	06/07/05	7:05:20	24.59	49.75	104.2	7.9	5.7
WS	06/07/05	7:10:20	24.59	49.75	104.2	7.9	5.8
WS	06/07/05	7:15:20	24.59	49.76	104.1	7.9	5.5
WS	06/07/05	7:20:20	24.59	49.75	104.2	7.9	6.1
WS	06/07/05	7:25:20	24.58	49.76	104.1	7.9	5.8
WS	06/07/05	7:30:20	24.58	49.76	104.0	7.9	6.0
WS	06/07/05	7:35:20	24.58	49.76	103.8	7.9	5.8
WS	06/07/05	7:40:20	24.58	49.76	104.0	7.9	6.1
WS	06/07/05	7:45:20	24.58	49.76	103.9	7.9	5.7
WS	06/07/05	7:50:20	24.58	49.76	104.0	7.9	6.0
WS	06/07/05	7:55:20	24.58	49.77	103.9	7.9	5.5
WS	06/07/05	8:00:20	24.58	49.77	103.3	7.8	5.6
WS	06/07/05	8:05:20	24.59	49.76	103.7	7.9	5.6
WS	06/07/05	8:10:20	24.59	49.76	103.4	7.9	6.0
WS	06/07/05	8:15:20	24.59	49.76	103.4	7.9	5.6
WS	06/07/05	8:20:20	24.59	49.76	103.6	7.9	6.3
WS	06/07/05	8:25:20	24.58	49.77	103.5	7.9	5.2
WS	06/07/05	8:30:20	24.58	49.76	103.4	7.8	5.6
WS	06/07/05	8:35:20	24.58	49.77	103.1	7.8	5.3
WS	06/07/05	8:40:20	24.57	49.77	103.0	7.8	5.6
WS	06/07/05	8:45:20	24.57	49.77	103.6	7.9	6.0
WS	06/07/05	8:50:20	24.57	49.77	103.2	7.8	5.6
WS	06/07/05	8:55:20	24.58	49.77	102.9	7.8	5.5
WS	06/07/05	9:00:20	24.58	49.77	103.0	7.8	5.4
WS	06/07/05	9:05:20	24.58	49.77	103.4	7.8	5.3
WS	06/07/05	9:10:20	24.57	49.78	103.3	7.8	5.3
WS	06/07/05	9:15:20	24.57	49.78	103.4	7.9	4.9
WS	06/07/05	9:20:20	24.58	49.77	103.3	7.8	5.1
WS	06/07/05	9:25:20	24.58	49.77	103.5	7.9	5.1
WS	06/07/05	9:30:20	24.57	49.78	103.4	7.9	5.5
WS	06/07/05	9:35:20	24.57	49.78	103.5	7.9	5.6
WS	06/07/05	9:40:20	24.58	49.78	103.3	7.8	5.7
WS	06/07/05	9:45:20	24.58	49.78	103.3	7.8	5.4
WS	06/07/05	9:50:20	24.57	49.78	103.1	7.8	5.5
WS	06/07/05	9:55:20	24.57	49.78	103.3	7.8	5.6
WS	06/07/05	10:00:20	24.57	49.78	103.4	7.9	5.4
WS	06/07/05	10:05:20	24.57	49.78	103.3	7.8	5.1
WS	06/07/05	10:10:20	24.57	49.79	103.3	7.8	4.8
WS	06/07/05	10:15:20	24.57	49.78	103.4	7.9	5.2
WS	06/07/05	10:20:20	24.58	49.78	103.3	7.8	4.8
WS	06/07/05	10:25:20	24.58	49.78	103.4	7.9	4.8
WS	06/07/05	10:30:20	24.57	49.79	103.4	7.9	5.3
WS	06/07/05	10:35:20	24.57	49.78	103.5	7.9	5.1
WS	06/07/05	10:40:20	24.57	49.79	103.3	7.8	4.8
WS	06/07/05	10:45:20	24.57	49.79	103.6	7.9	5.1
WS	06/07/05	10:50:20	24.59	49.79	103.6	7.9	4.5
WS	06/07/05	10:55:20	24.57	49.79	103.6	7.9	5.4
WS	06/07/05	11:00:20	24.57	49.79	103.7	7.9	5.3
WS	06/07/05	11:05:20	24.58	49.79	103.9	7.9	5.1
WS	06/07/05	11:10:20	24.57	49.79	104.0	7.9	5.2
WS	06/07/05	11:15:20	24.58	49.78	103.8	7.9	4.8
WS	06/07/05	11:20:20	24.58	49.79	103.8	7.9	4.8
WS	06/07/05	11:25:20	24.58	49.78	104.0	7.9	4.4
WS	06/07/05	11:30:20	24.60	49.78	104.0	7.9	4.4
WS	06/07/05	11:35:20	24.59	49.79	104.0	7.9	4.4
WS	06/07/05	11:40:20	24.59	49.79	104.0	7.9	4.6
WS	06/07/05	11:45:20	24.58	49.79	104.1	7.9	4.5
WS	06/07/05	11:50:20	24.60	49.79	104.1	7.9	4.5
WS	06/07/05	11:55:20	24.58	49.79	104.1	7.9	4.5
WS	06/07/05	12:00:20	24.59	49.80	104.1	7.9	4.7
WS	06/07/05	12:05:20	24.58	49.80	104.1	7.9	4.8
WS	06/07/05	12:10:20	24.59	49.79	104.1	7.9	4.4
WS	06/07/05	12:15:20	24.57	49.80	104.1	7.9	4.8
WS	06/07/05	12:20:20	24.58	49.79	104.1	7.9	4.8
WS	06/07/05	12:25:20	24.58	49.79	104.0	7.9	4.5
WS	06/07/05	12:30:20	24.60	49.79	103.9	7.9	4.3
WS	06/07/05	12:35:20	24.59	49.79	103.8	7.9	4.5
WS	06/07/05	12:40:20	24.59	49.80	103.8	7.9	4.5
WS	06/07/05	12:45:20	24.62	49.80	103.8	7.9	4.6
WS	06/07/05	12:50:20	24.62	49.80	104.6	7.9	4.8
WS	06/07/05	12:55:20	24.63	49.79	104.2	7.9	4.5
WS	06/07/05	13:00:20	24.65	49.79	104.6	7.9	4.8
WS	06/07/05	13:05:20	24.63	49.79	103.8	7.9	4.5
WS	06/07/05	13:10:20	24.62	49.80	104.2	7.9	4.5

* Bold value indicated action level exceedance.
 Bold italic value indicated limit level exceedance.

12-Hours Continuous Water Quality Monitoring Results

Location	Date	Time	Temperature, °C	Conductivity, ms/cm	DO saturation, %	Dissolved Oxygen, mg/L	Turbidity, NTU
WS	06/07/05	13:15:20	24.65	49.81	104.2	7.9	4.2
WS	06/07/05	13:20:20	24.63	49.80	104.4	7.9	4.7
WS	06/07/05	13:25:20	24.63	49.79	104.9	8.0	4.8
WS	06/07/05	13:30:20	24.63	49.80	104.4	7.9	4.7
WS	06/07/05	13:35:20	24.63	49.80	104.9	8.0	4.5
WS	06/07/05	13:40:20	24.69	49.80	105.2	8.0	4.4
WS	06/07/05	13:45:20	24.72	49.80	105.1	8.0	4.2
WS	06/07/05	13:50:20	24.71	49.80	104.9	7.9	4.7
WS	06/07/05	13:55:20	24.68	49.81	105.0	8.0	4.5
WS	06/07/05	14:00:20	24.73	49.81	104.9	7.9	5.1
WS	06/07/05	14:05:20	24.74	49.80	105.1	8.0	4.4
WS	06/07/05	14:10:20	24.75	49.80	105.0	8.0	4.5
WS	06/07/05	14:15:20	24.75	49.81	105.4	8.0	4.3
WS	06/07/05	14:20:20	24.73	49.80	104.9	7.9	4.2
WS	06/07/05	14:25:20	24.69	49.81	104.9	7.9	4.8
WS	06/07/05	14:30:20	24.74	49.80	104.4	7.9	4.5
WS	06/07/05	14:35:20	24.83	49.83	104.3	7.9	4.4
WS	06/07/05	14:40:20	24.80	49.82	104.7	7.9	3.9
WS	06/07/05	14:45:20	24.75	49.80	104.9	7.9	4.4
WS	06/07/05	14:50:20	24.73	49.81	104.6	7.9	4.6
WS	06/07/05	14:55:20	24.72	49.81	104.7	7.9	4.8
WS	06/07/05	15:00:20	24.73	49.81	104.7	7.9	4.2
WS	06/07/05	15:05:20	24.73	49.80	105.3	8.0	4.7
WS	06/07/05	15:10:20	24.73	49.81	105.4	8.0	4.4
WS	06/07/05	15:15:20	24.71	49.81	105.7	8.0	4.7
WS	06/07/05	15:20:20	24.69	49.80	105.7	8.0	4.7
WS	06/07/05	15:25:20	24.68	49.81	105.8	8.0	4.8
WS	06/07/05	15:30:20	24.66	49.82	105.5	8.0	4.8
WS	06/07/05	15:35:20	24.66	49.81	105.3	8.0	4.8
WS	06/07/05	15:40:20	24.65	49.82	105.3	8.0	4.5
WS	06/07/05	15:45:20	24.65	49.81	105.2	8.0	4.7
WS	06/07/05	15:50:20	24.64	49.82	105.0	7.9	4.9
WS	06/07/05	15:55:20	24.64	49.81	105.4	8.0	4.5
WS	06/07/05	16:00:20	24.64	49.81	104.7	7.9	4.6
WS	06/07/05	16:05:20	24.65	49.82	103.9	7.9	4.4
WS	06/07/05	16:10:20	24.67	49.81	103.8	7.9	3.8
WS	06/07/05	16:15:20	24.75	49.82	103.8	7.9	4.6
WS	06/07/05	16:20:20	25.00	49.85	103.7	7.9	4.5
WS	06/07/05	16:25:20	24.86	49.85	103.7	7.9	4.6
WS	06/07/05	16:30:20	24.71	49.82	103.5	7.8	4.6
WS	06/07/05	16:35:20	24.63	49.83	103.4	7.8	4.8
WS	06/07/05	16:40:20	24.63	49.82	103.4	7.8	5.3
WS	06/07/05	16:45:20	24.66	49.82	103.3	7.8	4.5
WS	06/07/05	16:50:20	24.63	49.82	103.3	7.8	4.6
WS	06/07/05	16:55:20	24.62	49.82	103.2	7.8	4.7
WS	06/07/05	17:00:20	24.62	49.83	103.6	7.8	4.8
WS	06/07/05	17:05:20	24.63	49.83	103.2	7.8	4.8
WS	06/07/05	17:10:20	24.75	49.83	103.8	7.9	4.7
WS	06/07/05	17:15:20	24.68	49.83	104.0	7.9	4.5
WS	06/07/05	17:20:20	24.69	49.83	103.4	7.8	4.6
WS	06/07/05	17:25:20	24.72	49.82	103.3	7.8	4.5
WS	06/07/05	17:30:20	24.72	49.82	103.1	7.8	4.8
WS	06/07/05	17:35:20	24.72	49.83	103.0	7.8	4.9
WS	06/07/05	17:40:20	24.73	49.86	102.4	7.8	5.1
WS	06/07/05	17:45:20	24.73	49.84	102.2	7.7	5.3
WS	06/07/05	17:50:20	24.81	49.84	102.3	7.8	5.5
WS	06/07/05	17:55:20	24.81	49.84	102.1	7.7	5.1
WS	06/07/05	18:00:20	24.85	49.86	102.1	7.7	4.7
WS	06/07/05	18:05:20	24.90	49.84	101.9	7.7	4.5
WS	06/07/05	18:10:20	24.82	49.85	101.9	7.7	4.7
WS	06/07/05	18:15:20	24.87	49.85	102.0	7.7	4.7
WS	06/07/05	18:20:20	24.83	49.86	101.7	7.7	4.7
WS	06/07/05	18:25:20	24.78	49.84	101.7	7.7	5.1
WS	06/07/05	18:30:20	24.87	49.85	101.5	7.7	4.2
WS	06/07/05	18:35:20	24.89	49.85	101.6	7.7	4.2
WS	06/07/05	18:40:20	24.83	49.85	101.5	7.7	4.5
WS	06/07/05	18:45:20	24.84	49.85	101.1	7.7	4.3
WS	06/07/05	18:50:20	24.82	49.84	101.8	7.7	4.7
WS	06/07/05	18:55:20	24.85	49.86	101.2	7.7	4.5
WS	06/07/05	19:00:20	24.83	49.86	100.9	7.6	4.8

* Bold value indicated action level exceedance.
 Bold italic value indicated limit level exceedance.

12-Hours Continuous Water Quality Monitoring Results

Location	Date	Time	Temperature, °C	Conductivity, ms/cm	DO saturation, %	Dissolved Oxygen, mg/L	Turbidity, NTU
WS	06/09/05	7:00:30	25.36	50.04	95.7	6.72	4.8
WS	06/09/05	7:05:30	25.34	50.04	100.1	7.02	5.9
WS	06/09/05	7:10:30	25.32	50.03	98.8	6.93	5.4
WS	06/09/05	7:15:30	25.31	50.03	98.0	6.89	5.1
WS	06/09/05	7:20:30	25.31	50.04	97.5	6.84	5.1
WS	06/09/05	7:25:30	25.37	50.07	97.0	6.80	4.6
WS	06/09/05	7:30:30	25.34	50.07	96.8	6.79	4.6
WS	06/09/05	7:35:30	25.29	50.04	96.9	6.80	4.0
WS	06/09/05	7:40:30	25.31	50.08	96.9	6.80	3.9
WS	06/09/05	7:45:30	25.28	50.07	96.9	6.80	5.7
WS	06/09/05	7:50:30	25.26	50.07	97.0	6.81	5.0
WS	06/09/05	7:55:30	25.27	50.09	97.1	6.82	5.4
WS	06/09/05	8:00:30	25.29	50.11	96.9	6.80	5.0
WS	06/09/05	8:05:30	25.29	50.11	96.8	6.79	4.7
WS	06/09/05	8:10:30	25.34	50.14	96.8	6.79	4.7
WS	06/09/05	8:15:30	25.38	50.15	96.5	6.76	5.7
WS	06/09/05	8:20:30	25.26	50.10	96.7	6.79	6.9
WS	06/09/05	8:25:30	25.30	50.11	96.7	6.78	4.4
WS	06/09/05	8:30:30	25.25	50.10	96.8	6.79	4.4
WS	06/09/05	8:35:30	25.22	50.09	96.9	6.80	3.8
WS	06/09/05	8:40:30	25.24	50.09	96.9	6.80	3.8
WS	06/09/05	8:45:30	25.25	50.09	96.6	6.78	3.8
WS	06/09/05	8:50:30	25.27	50.10	96.6	6.78	4.1
WS	06/09/05	8:55:30	25.30	50.12	96.1	6.75	4.4
WS	06/09/05	9:00:30	25.29	50.12	96.1	6.75	4.4
WS	06/09/05	9:05:30	25.32	50.12	95.8	6.73	4.4
WS	06/09/05	9:10:30	25.40	50.15	95.6	6.70	4.7
WS	06/09/05	9:15:30	25.27	50.11	96.0	6.75	3.8
WS	06/09/05	9:20:30	25.26	50.11	96.1	6.75	3.2
WS	06/09/05	9:25:30	25.31	50.13	95.9	6.73	3.8
WS	06/09/05	9:30:30	25.37	50.14	95.6	6.71	4.7
WS	06/09/05	9:35:30	25.31	50.13	95.8	6.72	4.1
WS	06/09/05	9:40:30	25.34	50.12	95.5	6.70	4.7
WS	06/09/05	9:45:30	25.26	50.11	95.6	6.72	4.7
WS	06/09/05	9:50:30	25.26	50.11	95.9	6.74	4.7
WS	06/09/05	9:55:30	25.28	50.12	95.7	6.72	3.8
WS	06/09/05	10:00:30	25.30	50.12	95.6	6.71	4.1
WS	06/09/05	10:05:30	25.30	50.13	95.5	6.71	5.4
WS	06/09/05	10:10:30	25.31	50.13	95.5	6.70	3.8
WS	06/09/05	10:15:30	25.28	50.12	95.5	6.71	4.7
WS	06/09/05	10:20:30	25.29	50.12	95.5	6.71	4.4
WS	06/09/05	10:25:30	25.28	50.11	95.6	6.72	4.7
WS	06/09/05	10:30:30	25.35	50.15	95.3	6.69	4.7
WS	06/09/05	10:35:30	25.31	50.13	95.4	6.70	4.1
WS	06/09/05	10:40:30	25.32	50.13	95.3	6.69	3.8
WS	06/09/05	10:45:30	25.34	50.14	95.2	6.68	3.8
WS	06/09/05	10:50:30	25.32	50.13	95.1	6.68	4.4
WS	06/09/05	10:55:30	25.32	50.13	95.1	6.68	3.5
WS	06/09/05	11:00:30	25.32	50.14	94.9	6.67	3.2
WS	06/09/05	11:05:30	25.32	50.13	95.1	6.68	3.2
WS	06/09/05	11:10:30	25.32	50.13	95.1	6.68	3.2
WS	06/09/05	11:15:30	25.31	50.12	95.2	6.69	2.5
WS	06/09/05	11:20:30	25.32	50.13	95.0	6.67	2.8
WS	06/09/05	11:25:30	25.34	50.14	95.3	6.69	3.2
WS	06/09/05	11:30:30	25.25	50.11	95.3	6.69	2.2
WS	06/09/05	11:35:30	25.27	50.12	95.2	6.69	1.9
WS	06/09/05	11:40:30	25.29	50.12	95.1	6.68	2.2
WS	06/09/05	11:45:30	25.34	50.14	95.2	6.68	2.8
WS	06/09/05	11:50:30	25.38	50.19	94.8	6.64	3.5
WS	06/09/05	11:55:30	25.42	50.21	94.7	6.63	3.2
WS	06/09/05	12:00:30	25.38	50.18	94.9	6.65	2.8
WS	06/09/05	12:05:30	25.37	50.16	95.0	6.65	2.5
WS	06/09/05	12:10:30	25.35	50.16	95.1	6.67	2.2
WS	06/09/05	12:15:30	25.35	50.15	95.2	6.68	2.8
WS	06/09/05	12:20:30	25.37	50.18	95.1	6.67	1.9
WS	06/09/05	12:25:30	25.39	50.19	95.0	6.67	1.9
WS	06/09/05	12:30:30	25.39	50.19	95.1	6.67	2.2
WS	06/09/05	12:35:30	25.38	50.18	94.9	6.65	2.5
WS	06/09/05	12:40:30	25.44	50.24	95.0	6.64	2.5
WS	06/09/05	12:45:30	25.45	50.25	94.8	6.63	2.2
WS	06/09/05	12:50:30	25.54	50.30	94.7	6.62	2.8
WS	06/09/05	12:55:30	25.55	50.30	94.7	6.62	2.8
WS	06/09/05	13:00:30	25.55	50.31	94.8	6.62	2.8
WS	06/09/05	13:05:30	25.55	50.31	94.8	6.62	2.8
WS	06/09/05	13:10:30	25.54	50.31	94.7	6.62	3.2

* Bold value indicated action level exceedance.
 Bold italic value indicated limit level exceedance.

12-Hours Continuous Water Quality Monitoring Results

Location	Date	Time	Temperature, °C	Conductivity, ms/cm	DO saturation, %	Dissolved Oxygen, mg/L	Turbidity, NTU
WS	06/09/05	13:15:30	25.42	50.21	95.1	6.67	1.9
WS	06/09/05	13:20:30	25.45	50.23	95.1	6.67	2.2
WS	06/09/05	13:25:30	25.39	50.20	95.3	6.69	1.9
WS	06/09/05	13:30:30	25.45	50.25	95.1	6.67	2.5
WS	06/09/05	13:35:30	25.38	50.19	94.8	6.64	2.5
WS	06/09/05	13:40:30	25.40	50.21	95.4	6.69	2.2
WS	06/09/05	13:45:30	25.39	50.19	95.6	6.71	1.9
WS	06/09/05	13:50:30	25.44	50.23	95.5	6.69	1.9
WS	06/09/05	13:55:30	25.48	50.26	95.5	6.69	1.6
WS	06/09/05	14:00:30	25.55	50.30	95.4	6.68	2.2
WS	06/09/05	14:05:30	25.52	50.28	95.6	6.69	1.9
WS	06/09/05	14:10:30	25.35	50.16	95.7	6.71	1.6
WS	06/09/05	14:15:30	25.31	50.15	95.6	6.71	1.9
WS	06/09/05	14:20:30	25.32	50.15	95.6	6.71	1.9
WS	06/09/05	14:25:30	25.32	50.15	95.6	6.71	1.3
WS	06/09/05	14:30:30	25.35	50.18	95.6	6.71	1.6
WS	06/09/05	14:35:30	25.41	50.22	95.5	6.70	1.6
WS	06/09/05	14:40:30	25.61	50.38	95.3	6.65	2.5
WS	06/09/05	14:45:30	25.39	50.21	95.5	6.70	2.2
WS	06/09/05	14:50:30	25.34	50.18	95.4	6.69	1.9
WS	06/09/05	14:55:30	25.48	50.26	95.4	6.68	2.2
WS	06/09/05	15:00:30	25.55	50.29	95.7	6.70	1.9
WS	06/09/05	15:05:30	25.52	50.28	95.7	6.70	2.8
WS	06/09/05	15:10:30	25.51	50.27	95.7	6.70	1.6
WS	06/09/05	15:15:30	25.49	50.26	95.8	6.71	1.6
WS	06/09/05	15:20:30	25.51	50.27	95.8	6.71	1.9
WS	06/09/05	15:25:30	25.50	50.27	95.7	6.70	1.9
WS	06/09/05	15:30:30	25.63	50.36	95.3	6.65	3.2
WS	06/09/05	15:35:30	25.63	50.35	95.2	6.64	3.8
WS	06/09/05	15:40:30	25.51	50.28	95.5	6.69	2.5
WS	06/09/05	15:45:30	25.51	50.29	95.6	6.69	1.9
WS	06/09/05	15:50:30	25.50	50.28	95.7	6.70	2.2
WS	06/09/05	15:55:30	25.50	50.28	95.7	6.70	2.2
WS	06/09/05	16:00:30	25.52	50.29	95.6	6.69	2.2
WS	06/09/05	16:05:30	25.52	50.29	95.7	6.70	2.2
WS	06/09/05	16:10:30	25.51	50.29	95.6	6.69	2.2
WS	06/09/05	16:15:30	25.49	50.27	95.6	6.70	1.9
WS	06/09/05	16:20:30	25.46	50.25	95.8	6.71	1.9
WS	06/09/05	16:25:30	25.50	50.28	95.8	6.71	2.2
WS	06/09/05	16:30:30	25.54	50.29	95.6	6.69	2.5
WS	06/09/05	16:35:30	25.50	50.27	95.7	6.70	2.2
WS	06/09/05	16:40:30	25.49	50.25	95.8	6.71	1.9
WS	06/09/05	16:45:30	25.49	50.25	95.9	6.72	2.2
WS	06/09/05	16:50:30	25.47	50.24	96.1	6.73	1.3
WS	06/09/05	16:55:30	25.47	50.24	96.2	6.74	1.3
WS	06/09/05	17:00:30	25.46	50.23	96.0	6.72	1.9
WS	06/09/05	17:05:30	25.47	50.24	96.0	6.73	1.9
WS	06/09/05	17:10:30	25.47	50.24	95.9	6.72	2.2
WS	06/09/05	17:15:30	25.46	50.24	95.9	6.72	2.2
WS	06/09/05	17:20:30	25.45	50.22	96.0	6.72	2.2
WS	06/09/05	17:25:30	25.45	50.23	95.8	6.71	2.2
WS	06/09/05	17:30:30	25.45	50.23	95.7	6.71	2.2
WS	06/09/05	17:35:30	25.44	50.22	95.8	6.71	1.9
WS	06/09/05	17:40:30	25.44	50.23	95.9	6.72	2.2
WS	06/09/05	17:45:30	25.44	50.23	95.9	6.72	2.2
WS	06/09/05	17:50:30	25.43	50.22	95.8	6.72	2.2
WS	06/09/05	17:55:30	25.43	50.23	95.8	6.72	1.9
WS	06/09/05	18:00:30	25.36	50.20	96.0	6.74	2.2
WS	06/09/05	18:05:30	25.41	50.20	96.0	6.73	1.9
WS	06/09/05	18:10:30	25.35	50.20	95.8	6.72	1.9
WS	06/09/05	18:15:30	25.37	50.20	95.9	6.73	1.9
WS	06/09/05	18:20:30	25.34	50.20	95.9	6.73	2.2
WS	06/09/05	18:25:30	25.41	50.21	95.9	6.73	2.2
WS	06/09/05	18:30:30	25.39	50.20	96.0	6.73	2.2
WS	06/09/05	18:35:30	25.40	50.20	96.2	6.75	1.9
WS	06/09/05	18:40:30	25.42	50.22	96.1	6.73	2.2
WS	06/09/05	18:45:30	25.40	50.21	96.3	6.75	2.2
WS	06/09/05	18:50:30	25.39	50.20	96.2	6.75	1.6
WS	06/09/05	18:55:30	25.40	50.21	96.1	6.74	2.2
WS	06/09/05	19:00:30	25.41	50.21	96.2	6.75	1.9

* Bold value indicated action level exceedance.
 Bold italic value indicated limit level exceedance.

12-Hours Continuous Water Quality Monitoring Results

Location	Date	Time	Temperature, °C	Conductivity, ms/cm	DO saturation, %	Dissolved Oxygen, mg/L	Turbidity, NTU
WS	06/10/05	7:00:15	26.32	45.15	99.2	6.88	2.0
WS	06/10/05	7:05:15	26.32	45.16	99.2	6.88	2.0
WS	06/10/05	7:10:15	26.32	45.17	99.0	6.87	1.8
WS	06/10/05	7:15:15	26.31	45.24	99.0	6.87	1.6
WS	06/10/05	7:20:15	26.31	45.21	98.9	6.86	2.0
WS	06/10/05	7:25:15	26.31	45.22	98.9	6.87	2.0
WS	06/10/05	7:30:15	26.32	45.16	98.7	6.85	1.8
WS	06/10/05	7:35:15	26.31	45.16	98.8	6.86	1.6
WS	06/10/05	7:40:15	26.32	45.08	98.1	6.81	1.8
WS	06/10/05	7:45:15	26.32	45.08	98.1	6.81	1.8
WS	06/10/05	7:50:15	26.32	45.09	97.9	6.80	2.6
WS	06/10/05	7:55:15	26.32	45.14	98.1	6.81	2.2
WS	06/10/05	8:00:15	26.34	45.02	97.9	6.79	2.6
WS	06/10/05	8:05:15	26.34	45.02	97.9	6.79	2.8
WS	06/10/05	8:10:15	26.33	45.15	98.2	6.81	2.4
WS	06/10/05	8:15:15	26.33	45.17	98.3	6.82	2.6
WS	06/10/05	8:20:15	26.32	45.19	98.6	6.84	2.4
WS	06/10/05	8:25:15	26.32	45.18	98.6	6.84	2.4
WS	06/10/05	8:30:15	26.33	45.18	98.6	6.84	3.6
WS	06/10/05	8:35:15	26.33	45.21	98.8	6.85	2.0
WS	06/10/05	8:40:15	26.33	45.20	98.7	6.85	2.4
WS	06/10/05	8:45:15	26.33	45.20	98.7	6.85	2.4
WS	06/10/05	8:50:15	26.32	45.23	98.8	6.85	2.4
WS	06/10/05	8:55:15	26.33	45.18	98.7	6.85	2.4
WS	06/10/05	9:00:15	26.32	45.21	98.7	6.84	2.4
WS	06/10/05	9:05:15	26.34	45.12	98.6	6.84	3.0
WS	06/10/05	9:10:15	26.35	45.02	98.2	6.81	3.4
WS	06/10/05	9:15:15	26.34	45.09	98.1	6.81	4.0
WS	06/10/05	9:20:15	26.35	45.06	98.5	6.84	3.2
WS	06/10/05	9:25:15	26.35	44.96	98.1	6.81	4.0
WS	06/10/05	9:30:15	26.34	45.05	98.1	6.81	4.2
WS	06/10/05	9:35:15	26.33	45.08	98.2	6.81	3.6
WS	06/10/05	9:40:15	26.34	45.02	98.0	6.80	5.1
WS	06/10/05	9:45:15	26.33	45.05	97.6	6.78	6.3
WS	06/10/05	9:50:15	26.34	44.96	97.6	6.78	4.7
WS	06/10/05	9:55:15	26.32	45.17	97.9	6.79	4.5
WS	06/10/05	10:00:15	26.31	45.29	98.4	6.82	3.8
WS	06/10/05	10:05:15	26.31	45.27	98.3	6.82	3.4
WS	06/10/05	10:10:15	26.32	45.23	98.2	6.81	4.0
WS	06/10/05	10:15:15	26.33	45.07	98.2	6.81	4.0
WS	06/10/05	10:20:15	26.31	45.34	98.2	6.81	4.0
WS	06/10/05	10:25:15	26.34	45.02	98.3	6.82	3.0
WS	06/10/05	10:30:15	26.36	44.96	98.4	6.83	2.8
WS	06/10/05	10:35:15	26.36	44.96	98.4	6.83	2.6
WS	06/10/05	10:40:15	26.36	44.96	98.4	6.83	2.8
WS	06/10/05	10:45:15	26.35	44.99	98.4	6.83	2.6
WS	06/10/05	10:50:15	26.35	45.00	98.5	6.83	2.6
WS	06/10/05	10:55:15	26.36	44.96	98.6	6.84	3.2
WS	06/10/05	11:00:15	26.35	44.99	98.6	6.85	2.6
WS	06/10/05	11:05:15	26.36	44.98	98.6	6.84	2.6
WS	06/10/05	11:10:15	26.36	44.98	98.7	6.85	2.6
WS	06/10/05	11:15:15	26.35	45.02	98.9	6.86	2.6
WS	06/10/05	11:20:15	26.36	44.99	98.8	6.86	2.8
WS	06/10/05	11:25:15	26.36	44.98	98.8	6.86	2.6
WS	06/10/05	11:30:15	26.36	44.96	98.9	6.86	3.0
WS	06/10/05	11:35:15	26.37	44.95	98.9	6.86	2.8
WS	06/10/05	11:40:15	26.37	44.94	98.9	6.86	3.0
WS	06/10/05	11:45:15	26.37	44.94	99.0	6.87	2.8
WS	06/10/05	11:50:15	26.37	44.95	98.9	6.87	3.0
WS	06/10/05	11:55:15	26.37	44.96	98.9	6.86	2.8
WS	06/10/05	12:00:15	26.37	44.94	98.9	6.86	3.2
WS	06/10/05	12:05:15	26.37	44.95	98.9	6.86	3.0
WS	06/10/05	12:10:15	26.37	44.98	98.9	6.86	3.0
WS	06/10/05	12:15:15	26.36	44.99	98.9	6.86	3.0
WS	06/10/05	12:20:15	26.36	45.00	98.9	6.86	3.4
WS	06/10/05	12:25:15	26.36	45.02	98.9	6.86	3.0
WS	06/10/05	12:30:15	26.36	45.00	98.9	6.86	2.8
WS	06/10/05	12:35:15	26.35	45.08	98.9	6.86	2.8
WS	06/10/05	12:40:15	26.35	45.07	98.9	6.86	2.8
WS	06/10/05	12:45:15	26.36	45.04	98.9	6.86	2.8
WS	06/10/05	12:50:15	26.35	45.09	98.9	6.86	2.6
WS	06/10/05	12:55:15	26.36	45.09	98.9	6.86	2.8
WS	06/10/05	13:00:15	26.35	45.10	98.9	6.86	2.8
WS	06/10/05	13:05:15	26.35	45.11	98.9	6.86	2.6
WS	06/10/05	13:10:15	26.35	45.14	98.9	6.86	3.0

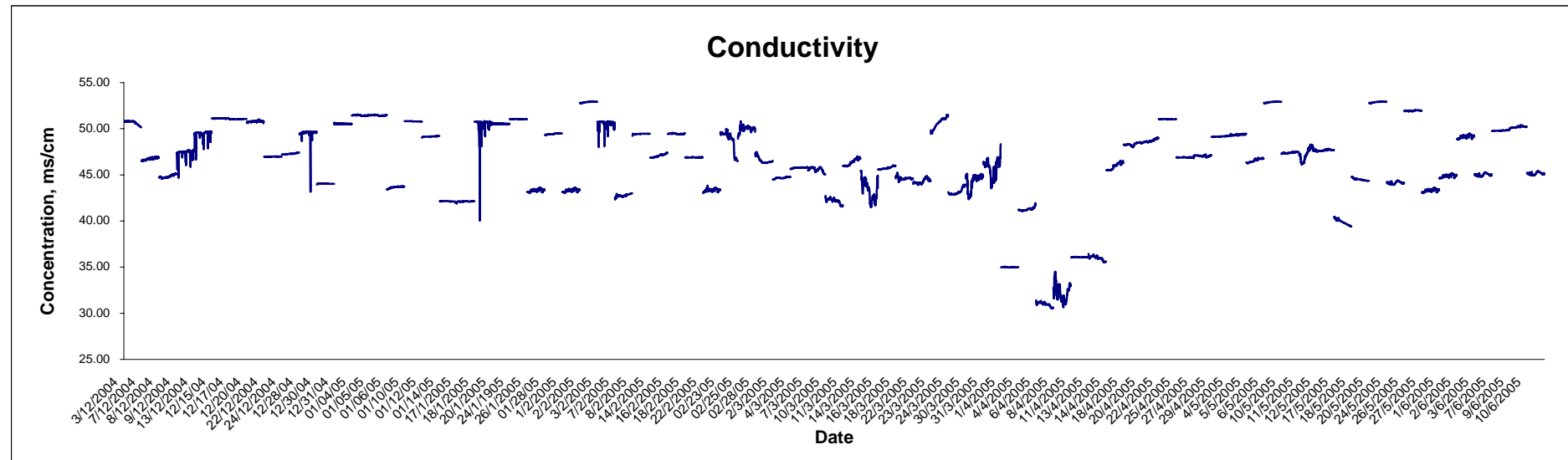
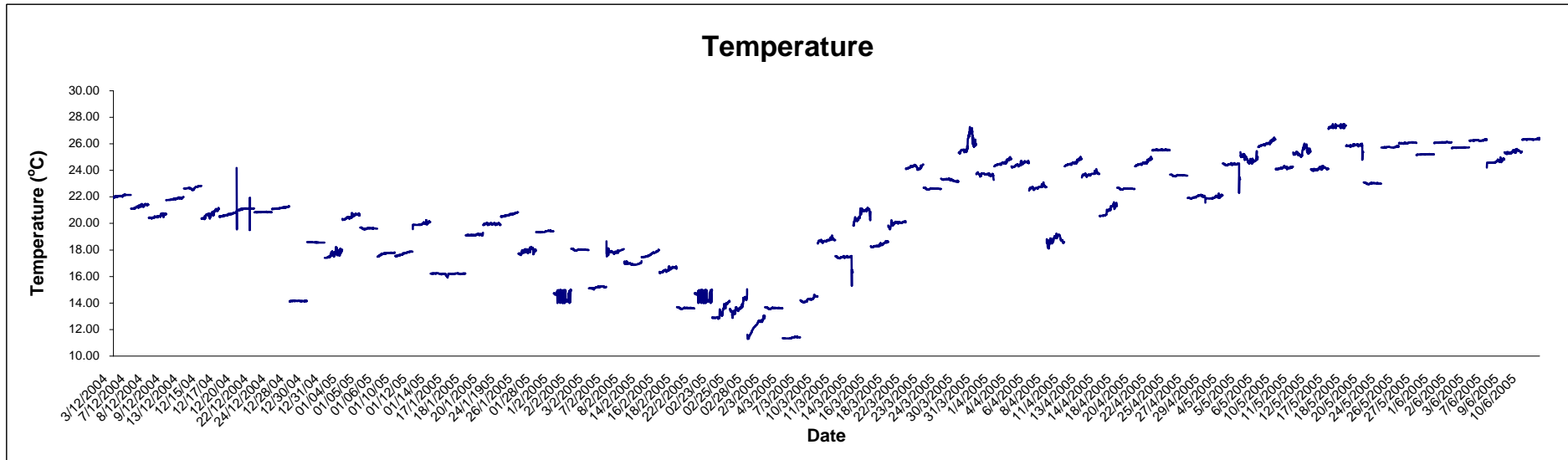
* Bold value indicated action level exceedance.
 Bold italic value indicated limit level exceedance.

12-Hours Continuous Water Quality Monitoring Results

Location	Date	Time	Temperature, °C	Conductivity, ms/cm	DO saturation, %	Dissolved Oxygen, mg/L	Turbidity, NTU
WS	06/10/05	13:15:15	26.34	45.19	99.0	6.87	2.4
WS	06/10/05	13:20:15	26.34	45.19	98.9	6.86	3.2
WS	06/10/05	13:25:15	26.34	45.22	99.0	6.86	2.4
WS	06/10/05	13:30:15	26.33	45.26	99.0	6.86	2.6
WS	06/10/05	13:35:15	26.34	45.25	98.9	6.86	2.0
WS	06/10/05	13:40:15	26.33	45.27	98.8	6.85	2.0
WS	06/10/05	13:45:15	26.33	45.28	98.8	6.85	2.2
WS	06/10/05	13:50:15	26.32	45.34	98.8	6.85	2.4
WS	06/10/05	13:55:15	26.31	45.37	98.7	6.85	2.8
WS	06/10/05	14:00:15	26.31	45.38	98.7	6.84	2.2
WS	06/10/05	14:05:15	26.31	45.38	98.6	6.84	2.2
WS	06/10/05	14:10:15	26.31	45.38	98.7	6.84	2.0
WS	06/10/05	14:15:15	26.31	45.39	98.6	6.84	2.0
WS	06/10/05	14:20:15	26.31	45.41	98.6	6.84	2.2
WS	06/10/05	14:25:15	26.31	45.40	98.6	6.83	3.8
WS	06/10/05	14:30:15	26.32	45.36	98.5	6.83	2.8
WS	06/10/05	14:35:15	26.31	45.40	98.5	6.83	3.0
WS	06/10/05	14:40:15	26.32	45.36	98.5	6.83	3.2
WS	06/10/05	14:45:15	26.31	45.41	98.6	6.84	2.0
WS	06/10/05	14:50:15	26.31	45.38	98.6	6.84	2.8
WS	06/10/05	14:55:15	26.32	45.36	98.6	6.84	2.6
WS	06/10/05	15:00:15	26.31	45.38	98.7	6.84	3.4
WS	06/10/05	15:05:15	26.32	45.36	98.7	6.84	2.4
WS	06/10/05	15:10:15	26.32	45.35	98.7	6.84	2.2
WS	06/10/05	15:15:15	26.32	45.34	98.6	6.84	2.6
WS	06/10/05	15:20:15	26.32	45.33	98.6	6.83	2.4
WS	06/10/05	15:25:15	26.33	45.31	98.8	6.85	3.0
WS	06/10/05	15:30:15	26.33	45.31	98.7	6.85	2.2
WS	06/10/05	15:35:15	26.32	45.33	98.7	6.84	2.2
WS	06/10/05	15:40:15	26.33	45.30	98.7	6.84	2.4
WS	06/10/05	15:45:15	26.33	45.30	98.6	6.84	2.4
WS	06/10/05	15:50:15	26.33	45.29	98.7	6.85	2.4
WS	06/10/05	15:55:15	26.33	45.29	98.7	6.84	2.2
WS	06/10/05	16:00:15	26.34	45.27	98.8	6.85	2.6
WS	06/10/05	16:05:15	26.34	45.26	98.8	6.85	2.6
WS	06/10/05	16:10:15	26.34	45.26	98.7	6.85	2.4
WS	06/10/05	16:15:15	26.35	45.26	98.8	6.85	2.4
WS	06/10/05	16:20:15	26.35	45.26	98.8	6.85	2.6
WS	06/10/05	16:25:15	26.36	45.24	98.9	6.86	2.0
WS	06/10/05	16:30:15	26.33	45.25	98.7	6.84	2.2
WS	06/10/05	16:35:15	26.34	45.23	98.6	6.84	2.4
WS	06/10/05	16:40:15	26.33	45.23	98.5	6.83	2.6
WS	06/10/05	16:45:15	26.34	45.22	98.4	6.82	2.4
WS	06/10/05	16:50:15	26.36	45.18	98.4	6.83	3.6
WS	06/10/05	16:55:15	26.35	45.17	98.7	6.85	2.2
WS	06/10/05	17:00:15	26.35	45.17	98.5	6.83	2.8
WS	06/10/05	17:05:15	26.35	45.18	98.5	6.83	2.4
WS	06/10/05	17:10:15	26.35	45.17	98.4	6.83	2.2
WS	06/10/05	17:15:15	26.36	45.16	98.4	6.83	2.4
WS	06/10/05	17:20:15	26.36	45.15	98.5	6.83	2.4
WS	06/10/05	17:25:15	26.38	45.12	98.5	6.83	2.2
WS	06/10/05	17:30:15	26.41	45.08	98.8	6.85	2.8
WS	06/10/05	17:35:15	26.42	45.07	99.4	6.90	2.4
WS	06/10/05	17:40:15	26.38	45.09	98.9	6.86	2.6
WS	06/10/05	17:45:15	26.39	45.06	98.6	6.83	2.8
WS	06/10/05	17:50:15	26.37	45.11	98.6	6.84	2.4
WS	06/10/05	17:55:15	26.42	45.07	98.7	6.84	2.4
WS	06/10/05	18:00:15	26.45	45.04	99.4	6.88	2.4
WS	06/10/05	18:05:15	26.38	45.13	98.9	6.86	2.4
WS	06/10/05	18:10:15	26.38	45.14	98.7	6.84	2.0
WS	06/10/05	18:15:15	26.37	45.15	98.4	6.82	2.8
WS	06/10/05	18:20:15	26.37	45.16	98.3	6.82	2.8
WS	06/10/05	18:25:15	26.36	45.17	98.4	6.82	3.0
WS	06/10/05	18:30:15	26.36	45.17	98.2	6.81	2.8
WS	06/10/05	18:35:15	26.37	45.15	98.3	6.82	2.8
WS	06/10/05	18:40:15	26.36	45.18	98.2	6.81	2.4
WS	06/10/05	18:45:15	26.35	45.21	98.2	6.81	2.8
WS	06/10/05	18:50:15	26.42	45.07	98.7	6.84	2.4
WS	06/10/05	18:55:15	26.45	45.04	99.4	6.88	2.4
WS	06/10/05	19:00:15	26.38	45.13	98.9	6.86	2.4

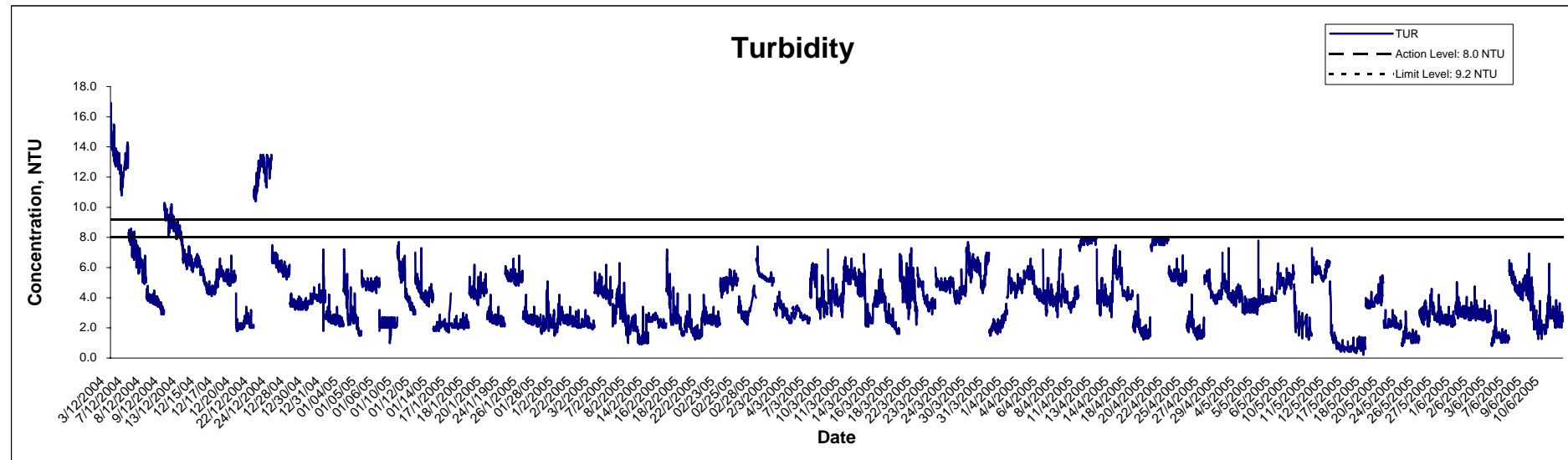
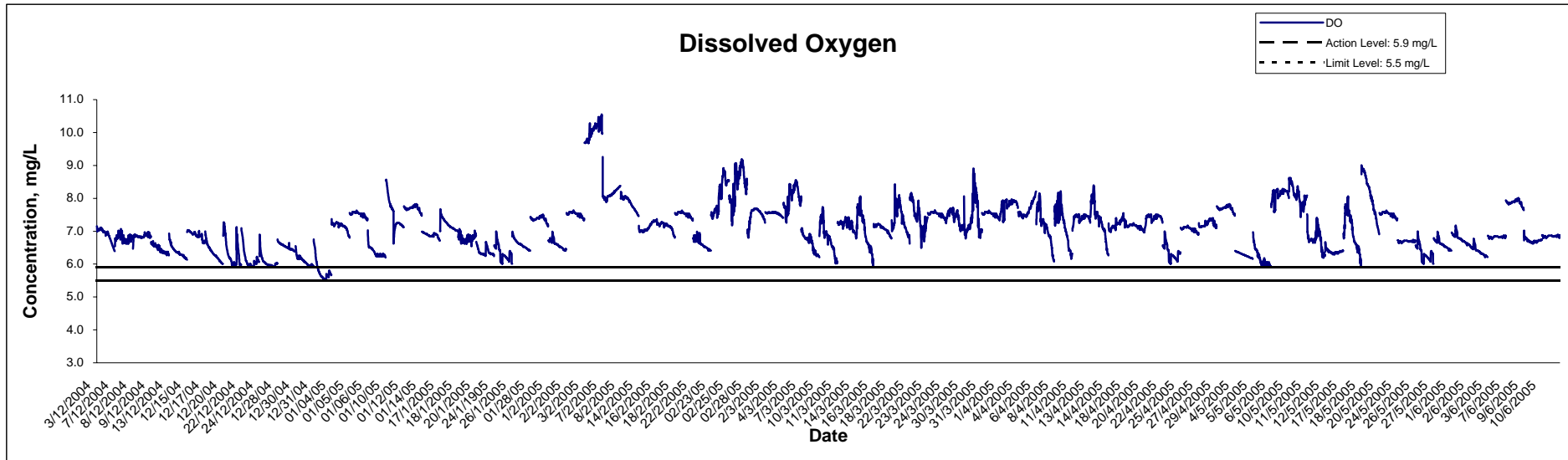
* Bold value indicated action level exceedance.
 Bold italic value indicated limit level exceedance.

12-Hours Continuous Water Quality Monitoring at WS



Title Contract No.EP/SP/40/02 Low Level Radioactive Waste Storage Facility at Siu A Chau Graphical Presentation of 12 Hours Water Quality Monitoring Results	Scale	N.T.S	Project	No. HW3025	CINOTECH
	Date	Jun 05	Appendix	F	

12-Hours Continuous Water Quality Monitoring at WS



Title <p style="text-align: center;">Contract No.EP/SP/40/02 Low Level Radioactive Waste Storage Facility at Siu A Chau</p> <p style="text-align: center;">Graphical Presentation of 12 Hours Water Quality Monitoring Results</p>	Scale	N.T.S	Project	No. HW3025	CINOTECH
	Date	Jun 05	Appendix	F	